

How Every Library Can Use Web GIS



Eva Dodsworth
Geospatial Data Services Librarian
University of Waterloo Library

Courtney Lundrigan
Librarian Intern/MLIS Candidate
Ryerson University
Library/University of Western
Ontario



Why are we here today?

Upgrading Skills to Include Web Mapping 2.0 Technology

- GIS technology is all around us. Library users are using it. It's time for library staff to use it too
- An introduction to Web GIS Resources
- Introduction to Visual/Spatial Literacy
- How are Library Staff using GIS?
- The importance of GIS training for library staff



Web 2.0 and Social Networking Technology

- Libraries are using social networking technology to connect with students
- Curtis Rogers (2009) conducted a survey of American library staff members to determine the variety of Web 2.0 and social networking sites utilized to promote library services and programs.
- Among the highest ranked were Facebook (71.4%), Flickr (49.6%), and Blogs (47.4%), followed by Twitter and Meebo (36.1%) and YouTube (35.3%). The survey did not include mapping based Web 2.0 applications, which was found to be a common omission among surveys studied.

Facebook : 400 million users

Flickr : 27 million users

Twitter : 105 million users

YouTube : 258 million users

Google Earth : Over 600 million users

Google Maps : Even more!



Are Libraries Using Mapping Products?

Eva Dodsworth and Andrew Nicholson, 2011, "Google Earth Usage in Academic Libraries" survey, (January, 2011, unpublished).

-Over 80 responses, US and Canada

- 45% use Google Mapping Products on a weekly bases (27% use them more than 3 times a week)
- 82% (58) used these products to answer research questions
- 61% (43) used these products for creating or accessing a finding aid tool
- 56% (40) for instruction purposes
- 27% for promotion/marketing
- 20% (14) have used them for project work such as georeferencing imagery, for use in webpages and for training purposes



Concepts to think about throughout this session

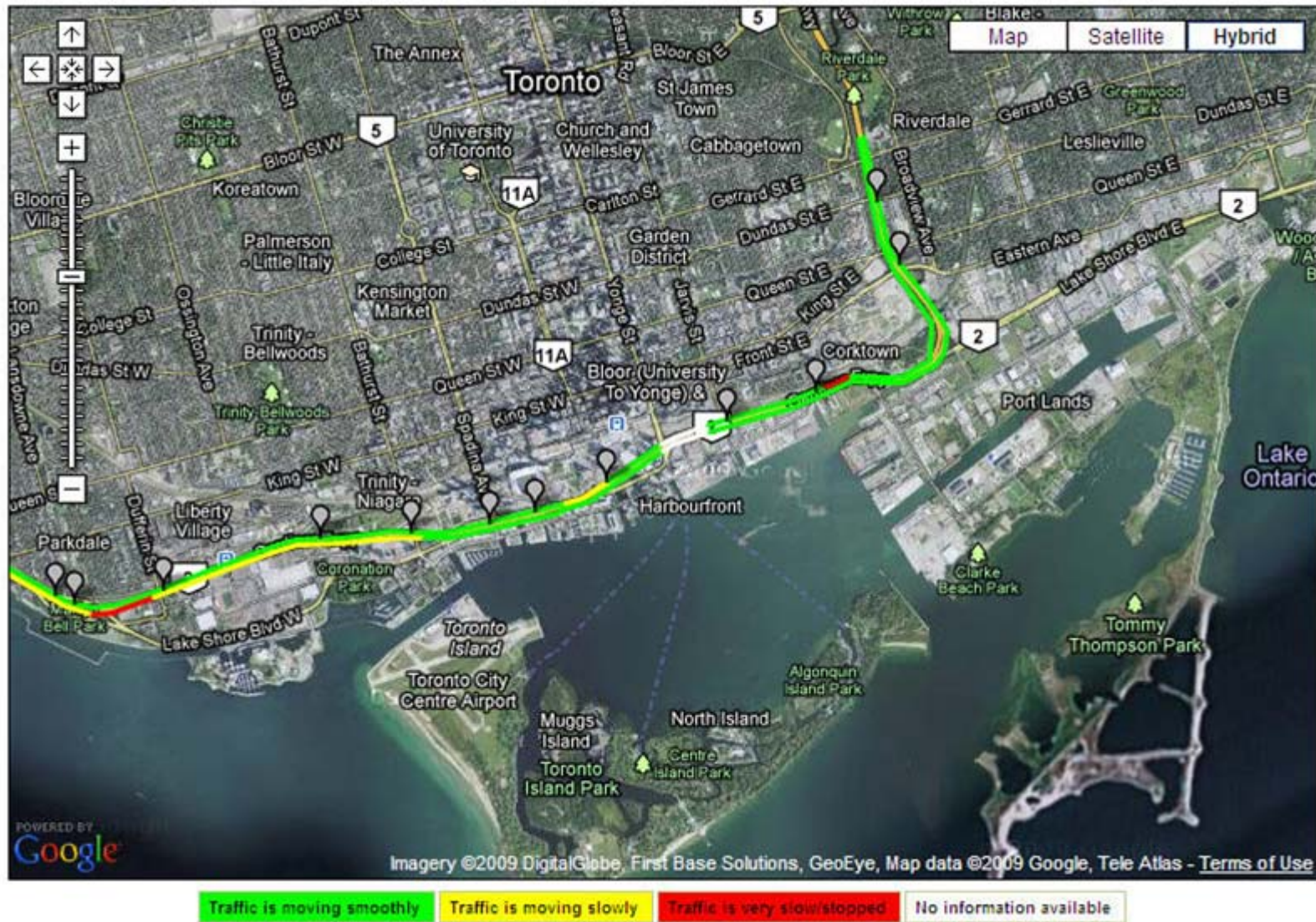
- How can these tools be used in your library?
- Are there opportunities to embed this technology into the course curriculum?
- Can you utilize this technology to outreach to library users?
- Can you utilize this technology to promote or deliver library services and resources?



Objective Number One: Geographical Awareness

GIS is Everywhere!

Everyday information is becoming widely presented in map form



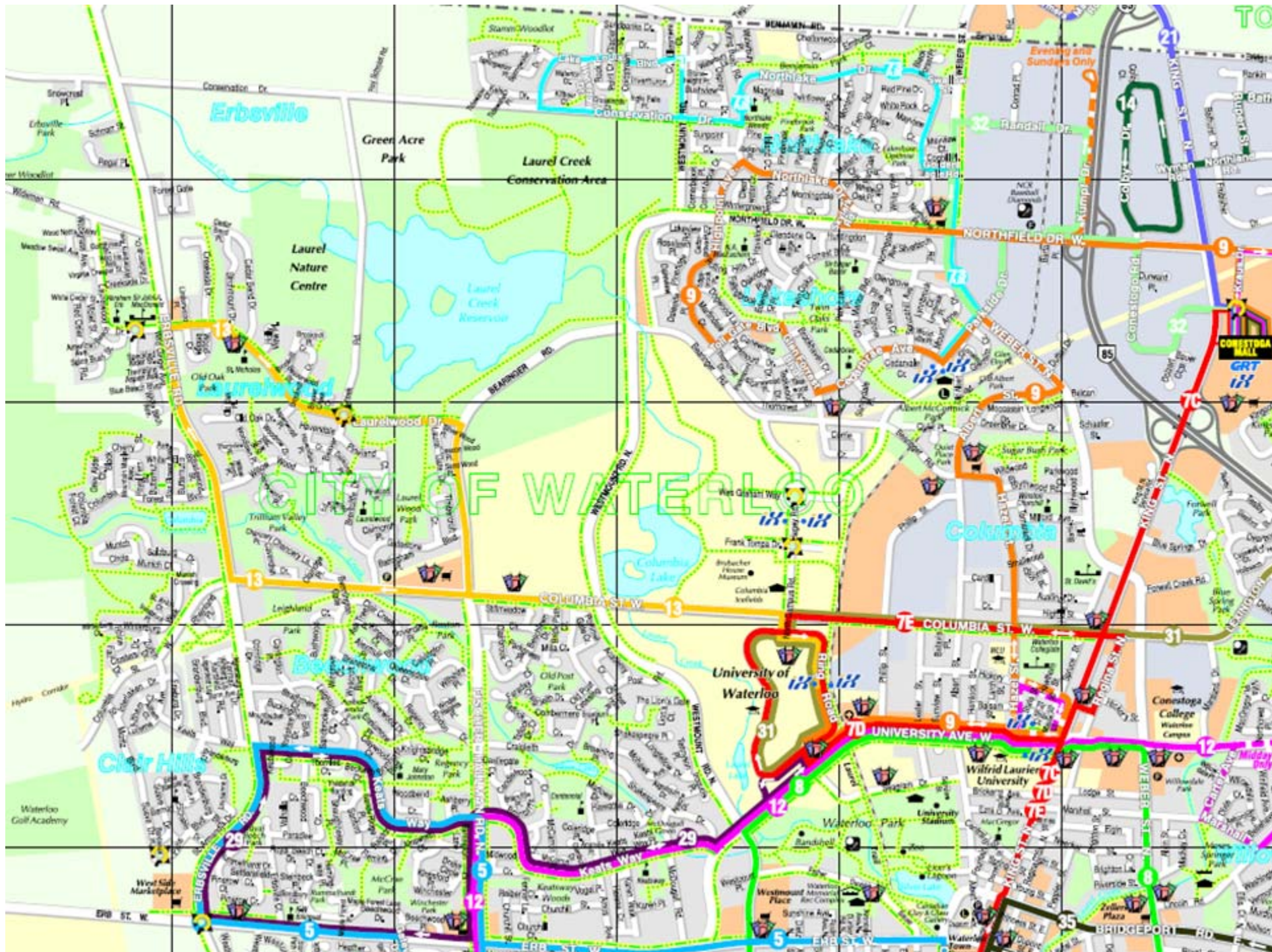
Traffic Flows

<http://toronto.ibegin.com/traffic/>

Flight Tracker



fboweb.com



[Home](#)

[Get Solar Estimate](#)

[Created RoofRays](#)

[Solar Guide](#)

[Widget](#)

[Mass Modeling](#)

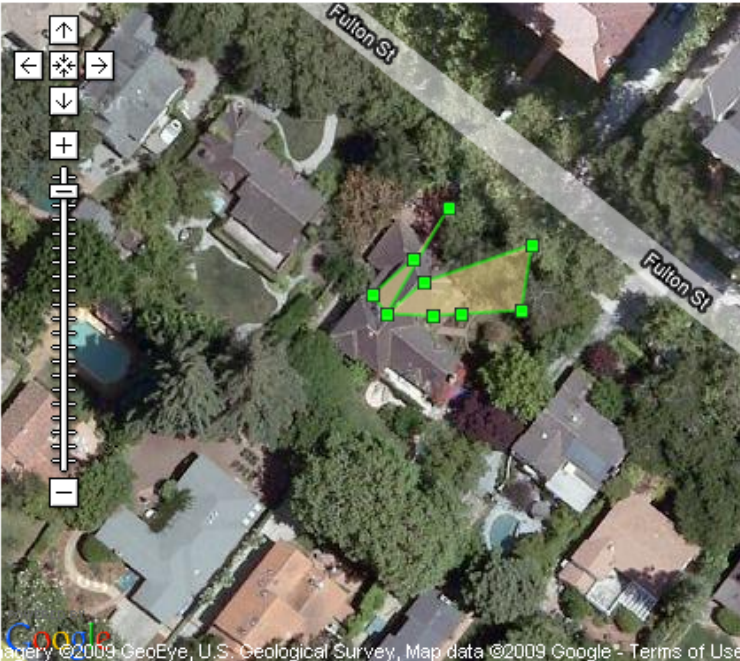
Address:

1 Create Solar Array

2 Current Electric Costs

3 Financial Analysis

4 Free Estimate



Name:

How-to Create Your First Array

1. Locate Your Property

- > Use the Address Search above
- > Then drag the map and zoom in/out until you're above the property

2. Click Corners of Roof

- > Click a point to create the first corner.
- > Continue to click other corners to form your array
- > When finished, re-click the first corner to close it off.



3. Determine Orientation

- > Drag the end of the red slope line to the bottom of the roof. (For flat roofs - leave at due south)

4. Select Roof Pitch or Tilt

- > Guesstimate your pitch using the slider - mid 20 degrees in typical

24

Make a mistake? No problem...


Segment	Potential	Power per Sq. Ft.	Area	Orientation	Total Peak Power	Delete	Calculate
	92%	12.03 Watts DC	988 Sq. Ft	?	11894.44 Watts DC	<input type="button" value="Remove"/>	<input checked="" type="checkbox"/>

District Taxi Fare Estimator



The estimator will help you determine your metered cab fare in Washington, D.C. You may choose one of our sample routes, or try your own by entering starting and destination addresses, or by dragging the green and red map markers. Remember, these are estimates. Actual fares will vary, depending upon exact route and how much time is spent stopped or slowed in congested traffic. **Rates effective December 4, 2008.**



1 Plan your travel:


Try a sample route:

Choose from this list... 

Create your own route:

 **Starting Address**  Zoom to
Enter an address or use the map...

 **Destination Address**  Zoom to
Enter an address or use the map...

 Reverse route

Get route

2 Estimated fares:

Fares will calculate and display here.

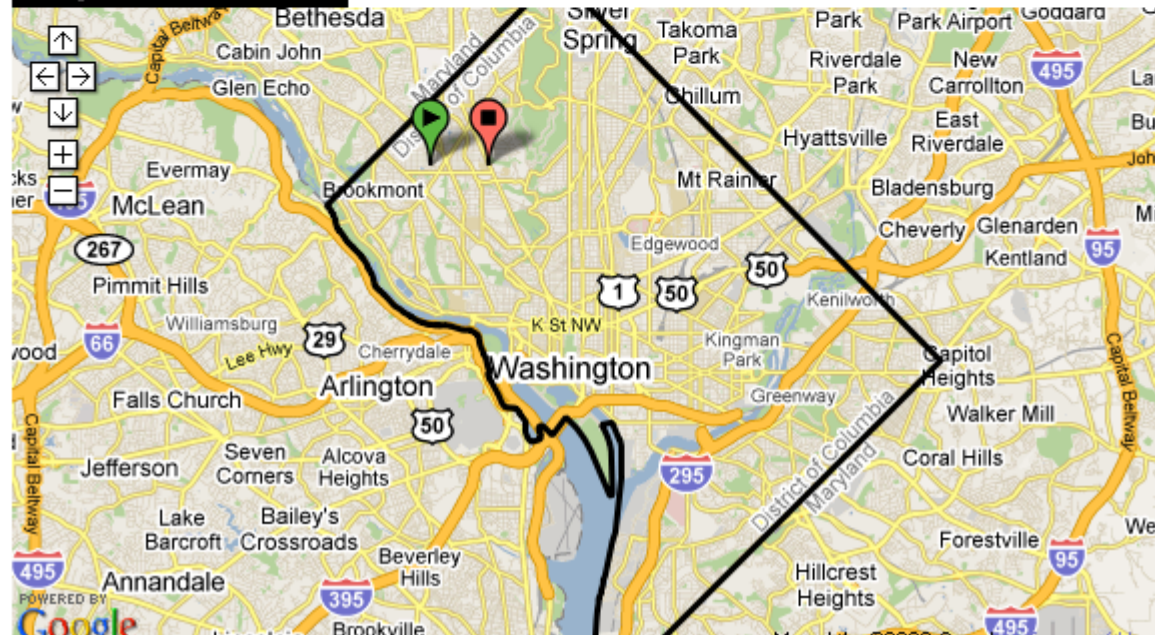
- **Start in Washington, D.C. only.**
- **Don't know an address?** Position the start and destination markers by dragging them to new map locations.
- **Want more map detail?** Click a marker to get a neighborhood view on a satellite image.
- **See the effect of one-way streets** on fares by using the "reverse route" button.

Help

Advanced settings

Map of travel route:

Exact route may vary due to construction and other factors.



Gmaps Pedometer

Recording...
Undo last point

english metric

Total Distance: 2.4062 km

Draw route:
 automatically (for runners)
 automatically (for cyclists)
 manually (straight lines)

Turn off mile markers
Turn on calorie counter
Elevation: off [small](#) [large](#)
[Complete there and back route](#)

[Save route](#)

[Clear points and start over](#)

[Print map](#)

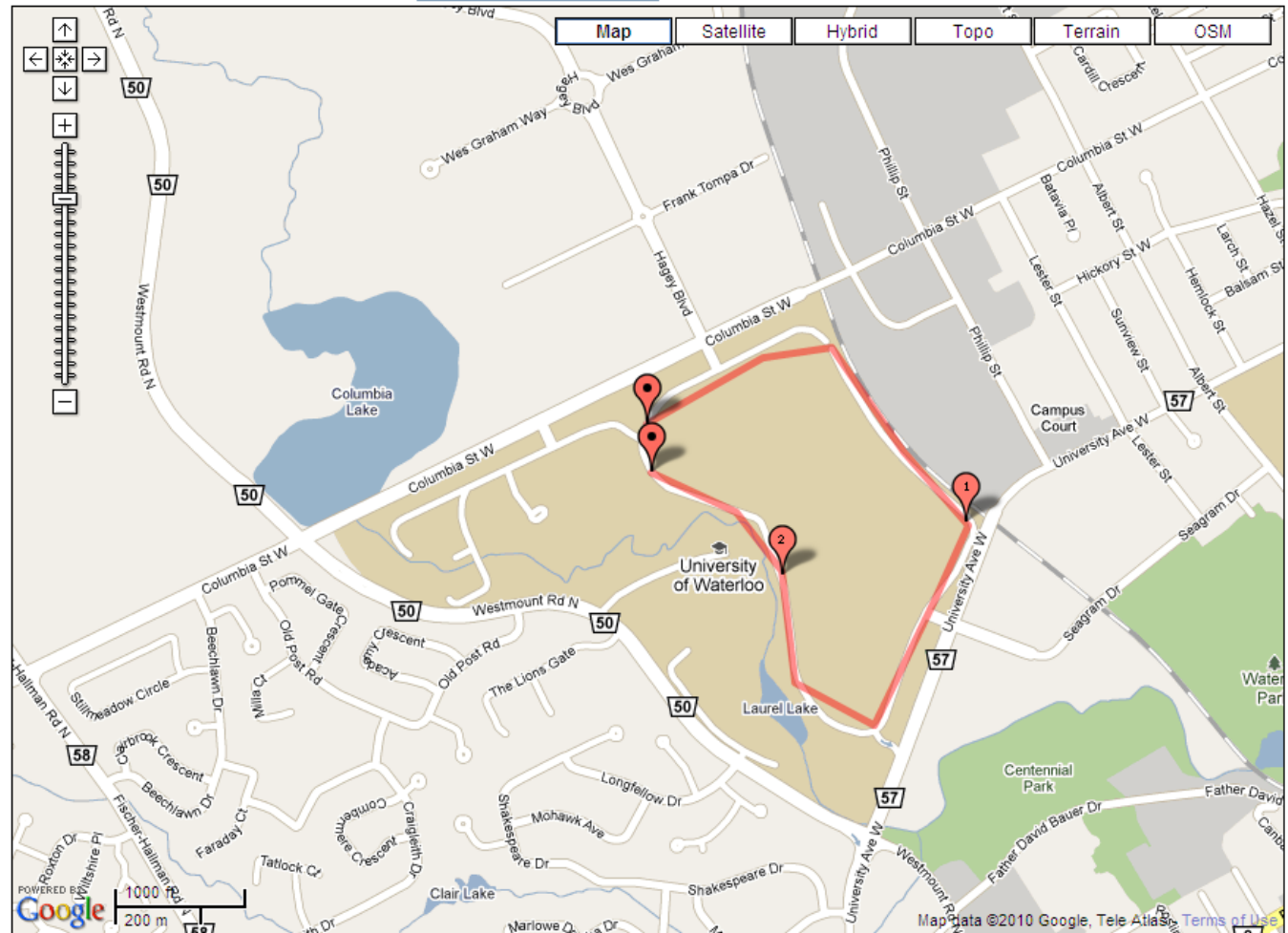
[Export as GPX \(external link\)](#)

[Message Board \(Mileposts\)](#) | [Support](#) | [FAQ](#) | [About](#) | [Usage Instructions](#) | [Acknowledgements](#) | [Change History](#)
(All links open in a new window)

NEW feature: [Open Street Map](#) overlay!
[Find out](#) why your friendly neighborhood map nerd is excited about this!

Been there, done that, [bought the shirt](#). Shop the new [gmap-pedometer t-shirt shop](#).

Jump to: | zoom: 12 | [go](#) [more options](#)



<http://www.gmap-pedometer.com/>

<http://maps.tctrail.ca/index.jsp#> Trans Canada Trail


wyman


Activities this month: 8

- [View Profile](#)
- [View Activities](#)
- [Invite to your Street Team](#)

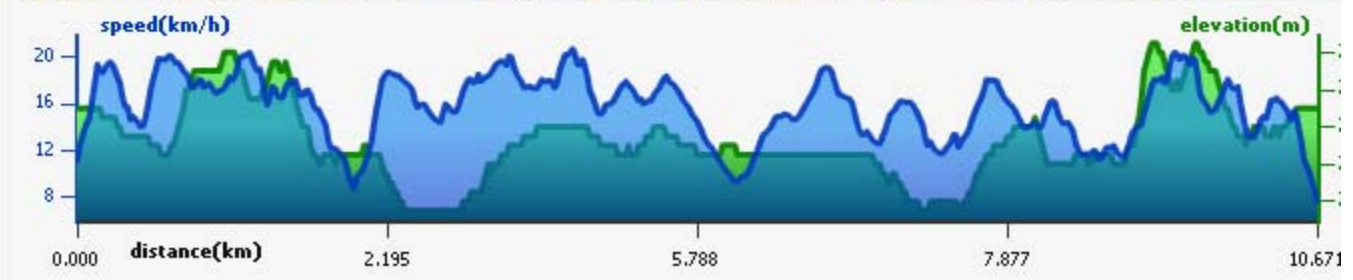
Public Activity History

Month	Year	Date	Time	Distance
Mar	2010	3/24/10	8:48 am	4.85 km
Mar	2010	3/23/10	8:17 pm	3.53 km
Mar	2010	3/22/10	7:14 pm	10.67 km
Mar	2010	3/22/10	4:56 pm	6.02 km
Mar	2010	3/20/10	4:18 pm	4.39 km
Mar	2010	3/18/10	3:30 pm	4.46 km
Mar	2010	3/17/10	3:54 pm	3.48 km
Mar	2010	3/16/10	3:48 pm	3.63 km

Label:

activity date: **3/22/10** activity type: **Cycle**

Start Time	End Time	Duration	Distance	Avg. Pace	Avg. Speed	Climbed	Burned
7:14 pm	8:00 pm	0:45:29	10.67	4:16	14.07	70	276
		h : m : s	km	per km	km/h	m	calories



notes:

splits

km	pace	climb (m)
1	4:57	0

share this activity

Save Search

Map View Gallery View Thumbnail View

Refine Your Search

Looking For
Residential

Open House Only

For Sale For Rent

Price Range
600,000 Unlimited

Beds Baths
Any Any

Building Type
No Preference

Style

Storeys View
Any No Preference

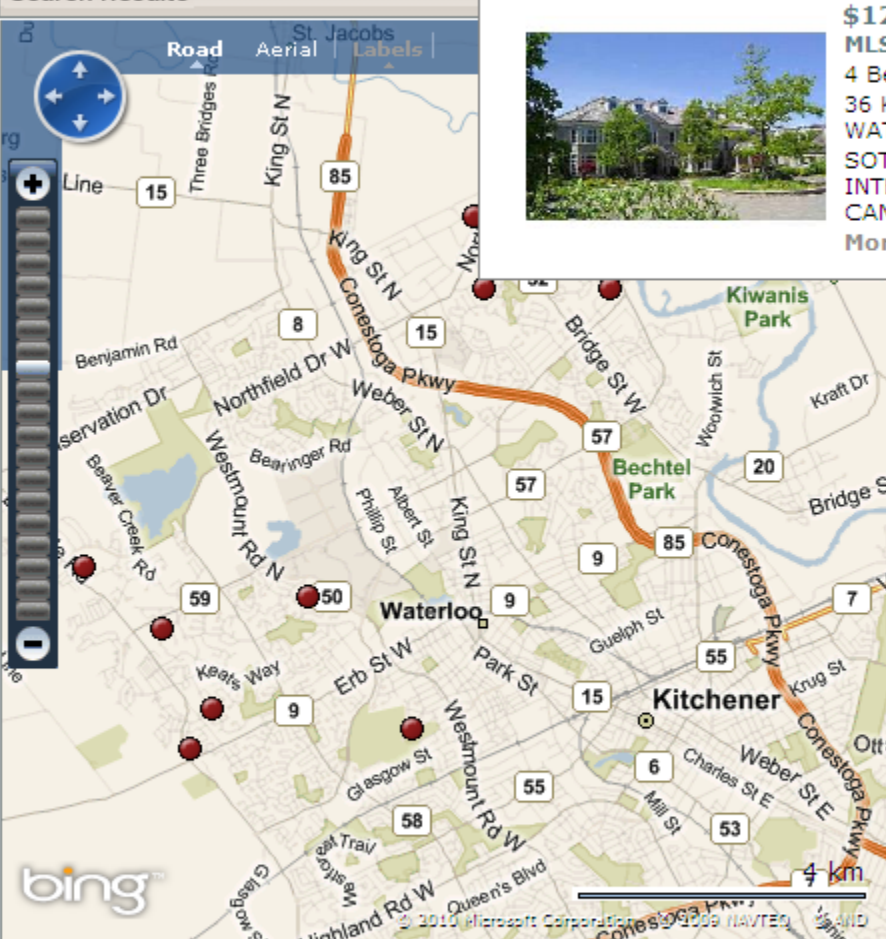

Garage Fireplace
 A/C Acreage
 Pool Waterfront

Show new listings only:

Sort results by
Price Ascending

Refine

Search Results

\$12,500,000
MLS® X1575308
4 Beds, 9 Baths
36 KRAFT DR,
WATERLOO
SOTHEBY'S
INTERNATIONAL REALTY
CANADA, BROKERAGE
[More Information](#)

\$629,900
MLS® 1011437
2 + 1 Beds, 2 Baths
12 WEST HILL DRIVE,
WATERLOO
RE/MAX TWIN CITY
REALTY INC. Brokerage,
Independently Owned
and Operated
[More Information](#)



\$639,900
MLS® 0944069
4 + 1 Beds, 4 Baths
569 HEMINGWAY PLACE,
WATERLOO
RE/MAX SOLID GOLD
REALTY (II) LTD.
Brokerage,
Independently Owned
and Operated
[More Information](#)



\$639,900
MLS® 1014557
2 Beds, 3 Baths
35 INVERNESS DRIVE,
KITCHENER
C M A REALTY LTD.,
BROKERAGE
[More Information](#)

\$675,000
MLS® 1011369



Vehicle Make: -
Model: -
Within: 100 Miles of
ZIP Code: 95125
Search

- Acura
- Alfa Romeo
- AMC
- Aston Martin
- Audi
- Austin
- Austin Healey
- Bentley
- BMW
- Buick
- Bugatti
- Cadillac
- Chevrolet
- Chrysler
- Citroen
- Cord
- Daewoo
- Datsun
- DeLorean
- DeSoto
- Dodge
- Eagle
- Edsel
- Ferrari
- Fiat
- Ford
- Geo
- GMC
- Honda



Feeds Select: all, none

News/Media

- Google News
- Moreover Technologies
- Wildlife Disease Node

+ more...

Scientific Reports

- ProMED Mail
- GeoSentinel
- EuroSurveillance

+ more...

Community Contributions

- News Reports
- Eyewitness Reports

Official Sources

- World Health Organization

Category

- International Significance
- New & Ongoing Outbreaks
- Warnings

Diseases Select: all, none

- Not Yet Classified (564)
- Swine Flu H1N1 (499)
- Dengue Fever (484)
- Influenza (158)
- Cholera (138)
- Avian Influenza (121)

Zoom to: [N. America](#) [S. America](#) [Europe](#) [Africa](#) [Mideast](#) [Asia](#) [Australia](#) [World](#)

[Full Screen](#)

Worldwide Alerts | Latest alerts



Date range: 18 Feb - 4 Mar



Last update: 4 Mar 2010 15:01 | Next update: 4 Mar 2010 16:01



The Bedbug Registry

[look up + report](#)[alerts](#)[city maps](#)[resources](#)[about](#)[faq](#)[blog](#)

Toronto

Toronto has 2270 bed bug reports.

See [recent reports](#) for Toronto.

Click on any point in the map to see a neighborhood map, or use one of the search boxes below:

Hotel name:

Street Address:

[Bed Bugs Biting?](#) www.heatngopestcontrol.com

Get rid of them. Fast and effective Bed bugs will stay dead. Guaranteed

[Toronto Bed Bugs](#) torontobedbugs.com

Toronto Bed Bug Extermination Call Now
416-628-4803

[Hotel Bed Bug](#) www.webcrawler.com

Search multiple engines for hotel bed bug

[Bed Bug Protectors](#) www.BedBugMattressCoverStore.com

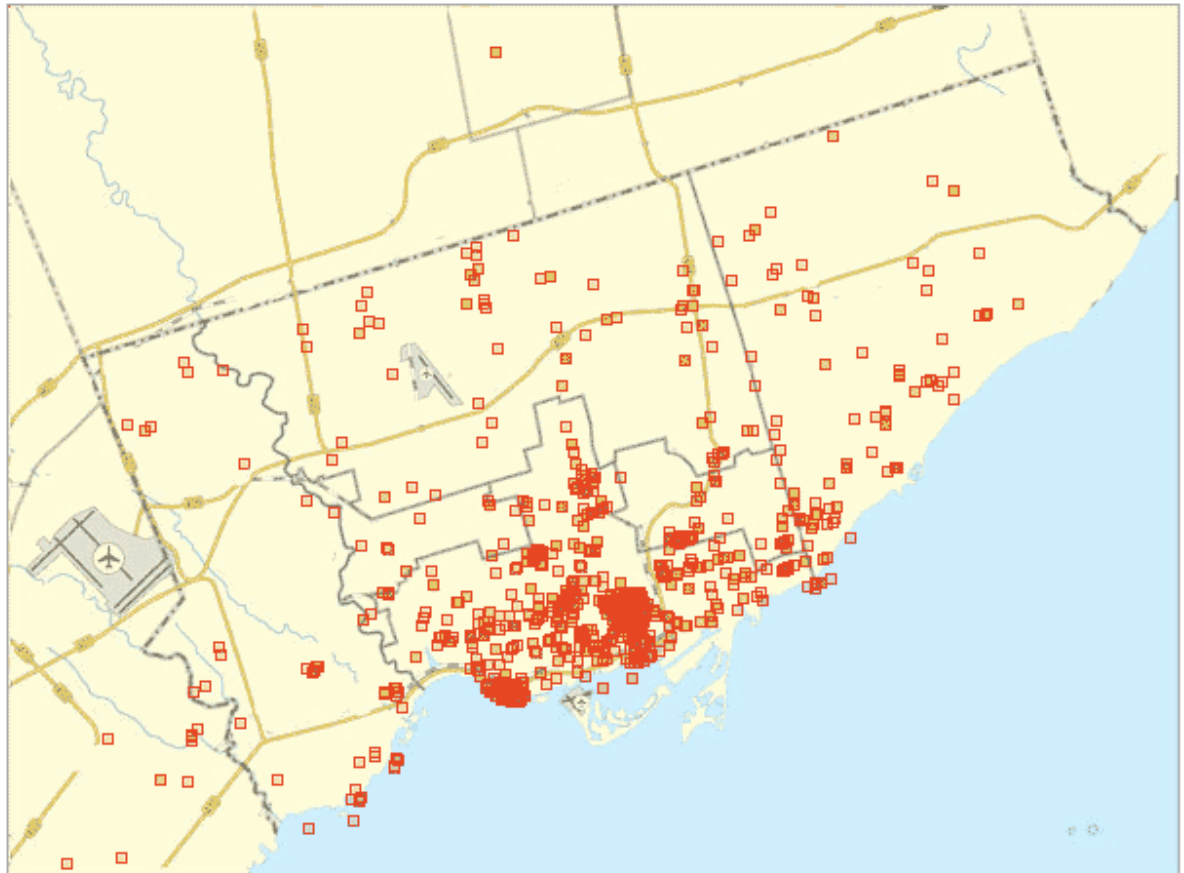
Protect your mattress, pillows & comforters. On Sale Now.



Your next pet is on your local Kijiji



The #1 FREE Classifieds Site in Canada





Web 2.0 and the Neogeographer

- You don't need to be a professional cartographer to create a map
- You don't need to be a programmer to create a mapping application

Neogeography : Essentially, Neogeography is about people using and creating their own maps, on their own terms and by combining elements of an existing toolset. *Andrew Turner, 2007.*

Also known as Citizen Mapping



Citizen Mapping Projects

- Urban Forest Map : <http://www.urbanforestmap.org/map/>
- Open Street Map : openstreetmap.org



Search for species

Examples: [Monterey Pine](#) or [Cupressus macrocarpa](#)

Location

near

Examples: [210 Columbus Ave, North Beach, 94133](#)

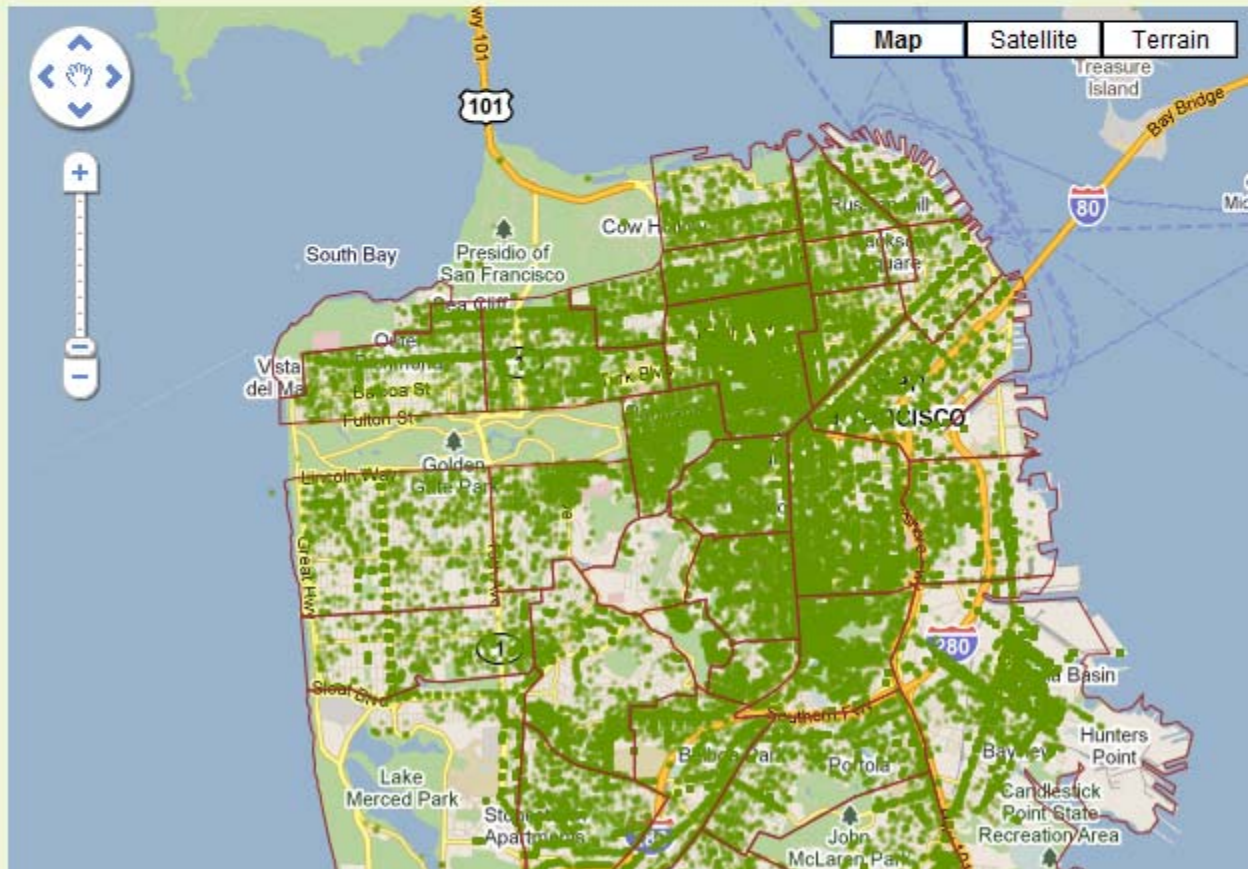
[Search San Francisco](#)[Show advanced filters](#)

0 trees selected | [Add a tree!](#)

Export options: [KML](#) | [CSV](#) | [Shapefile](#)

Yearly Eco Impact

Selected trees in ..



0 trees selected | [Add a tree!](#)

Export options: [KML](#) | [CSV](#) | [Shapefile](#)

Yearly Eco Impact

Selected trees in ..

The map interface includes a compass and zoom controls on the left, a map style selector (Map, Satellite, Terrain) at the top right, and a scale bar (100 ft / 50 m) at the bottom left. A popup window titled 'Quick view' displays the following information:

Species name	<i>Magnolia grandiflora</i>
Common name	Southern magnolia
Tree number	#138710
Nearby address	60 Rausch St
Trunk diameter	Unknown
Last updated	Sept. 14, 2010
Alerts	No Alerts
Yearly eco impact	Not Available

Additional options in the popup:

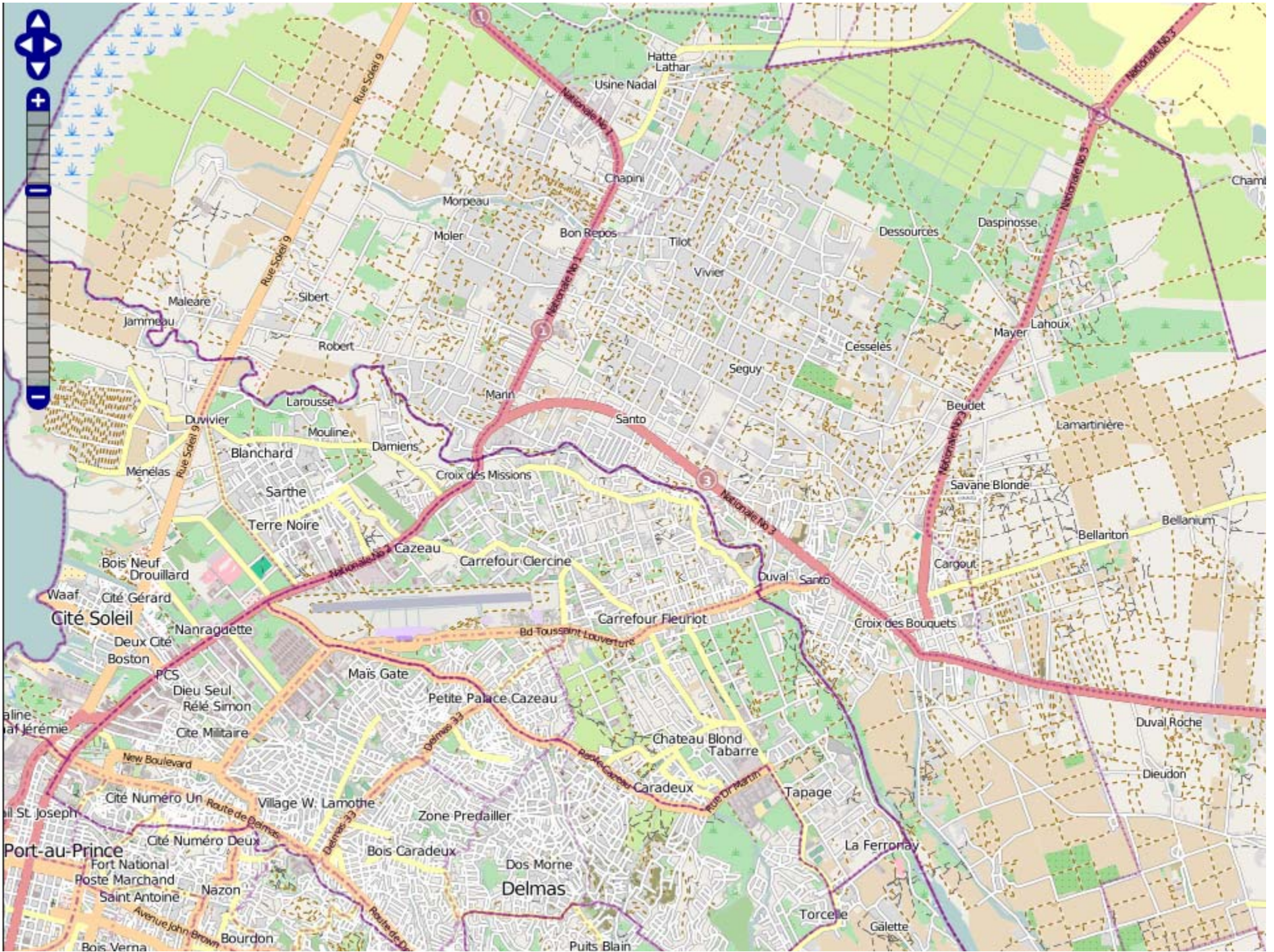
- [View all details](#) (Tree's profile page)
- [Edit details](#) (Tree's edit page)

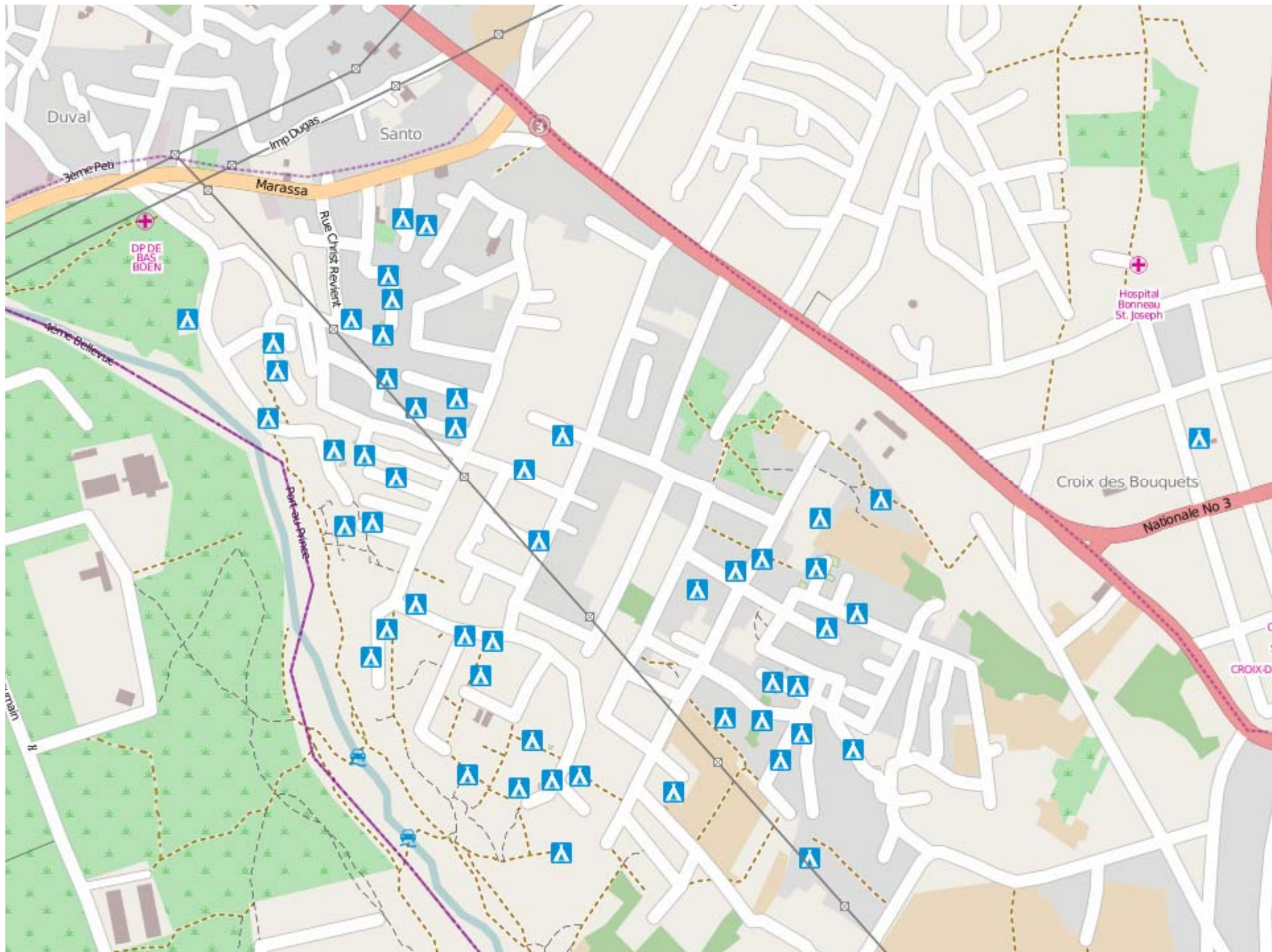
Map data ©2011 Google, Sanborn, (c) bar - [Terms of Use](#)



DigitalGlobe WorldView2 2010-01-18

Las
Matas
de Farfán





OpenStreetMap vs Google Maps

OpenStreetMap

OpenStreetMap
The Free Wiki World Map

View Edit History Export GPS Traces User Diaries log in | sign up

OpenStreetMap is a free editable map of the whole world. It is made by people like you. OpenStreetMap allows you to view, edit and use geographical data in a collaborative way from anywhere on Earth. OpenStreetMap's hosting is kindly supported by the UCL VR Centre and bytemark. Other supporters of the project are listed in the wiki.

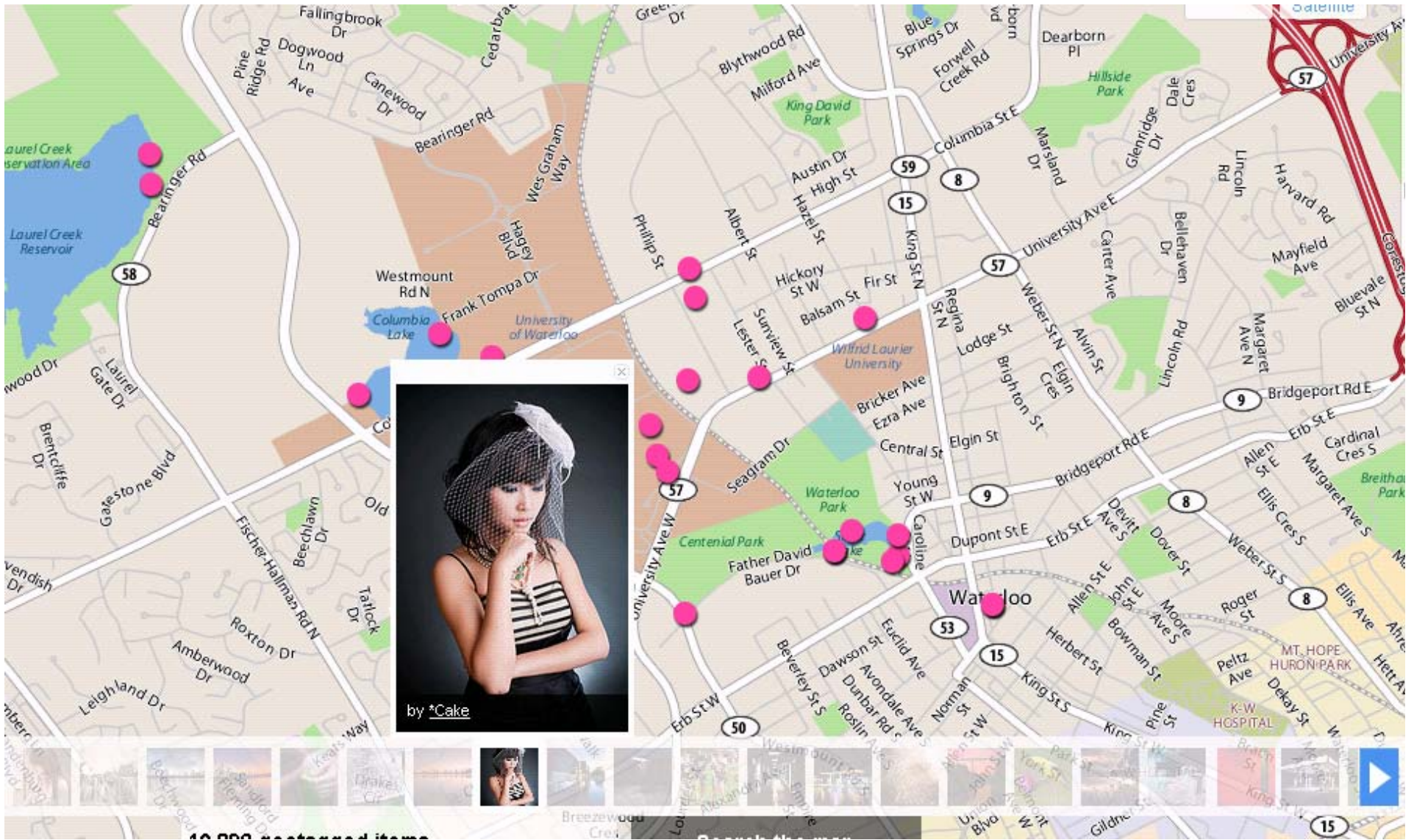
Help Centre
Documentation
Copyright & License
Community Blogs
Foundation
Map Key

Search Where am I?
Bengaluru
Examples: 'Aikmaar', 'Regent Street, 'Bridge', 'CB2 5AQ', or 'post boxes near Lünen' more examples...

100 m
500 ft

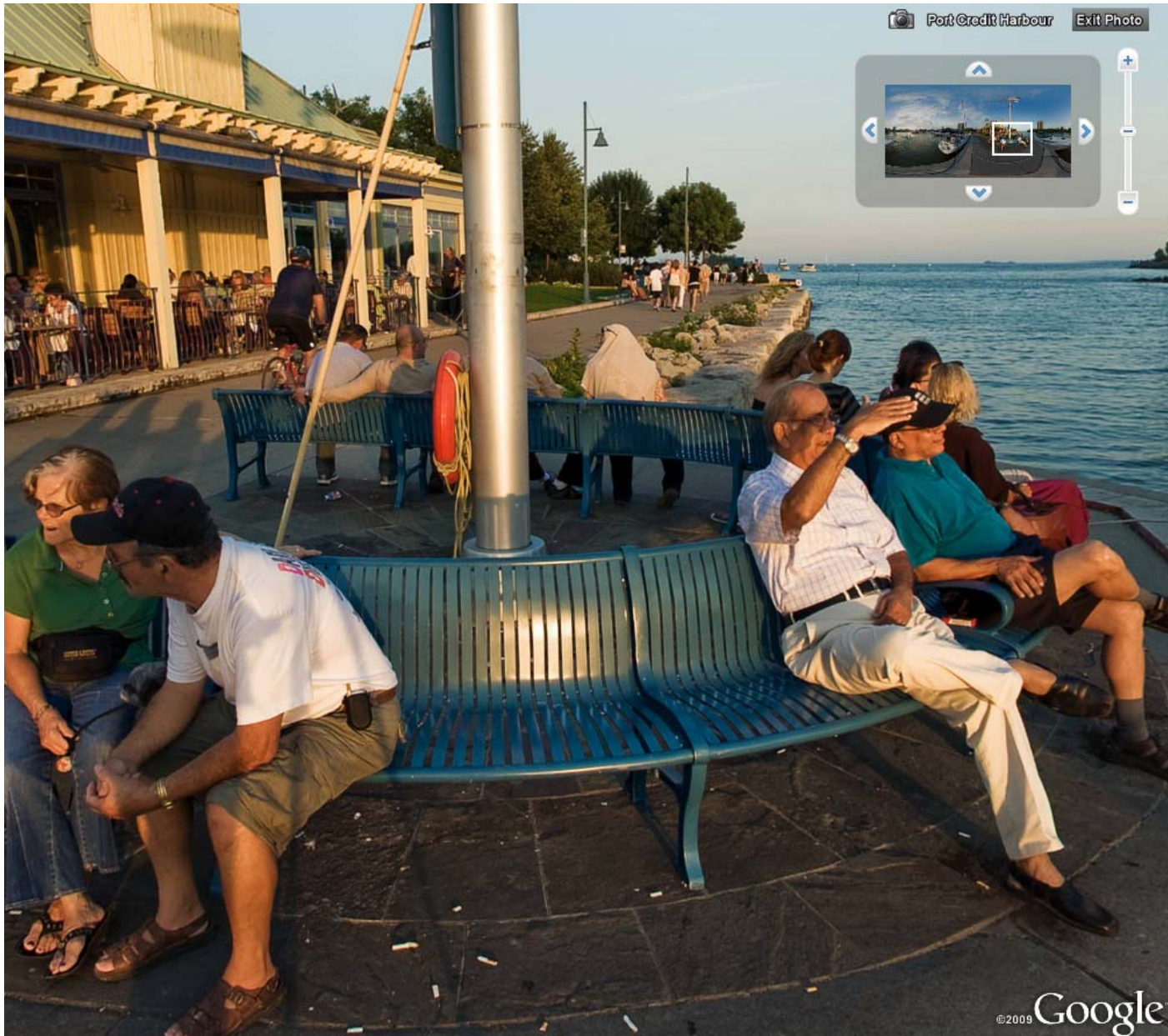
Google Maps





Search for photos spatially

Google Earth 360 photos





Our interest in locations is providing much more than a spot on the map :

- It has increased our awareness of the world outside our doorstep
- It has validated the benefits and ease of sharing information
- It has brought communities with same interests together





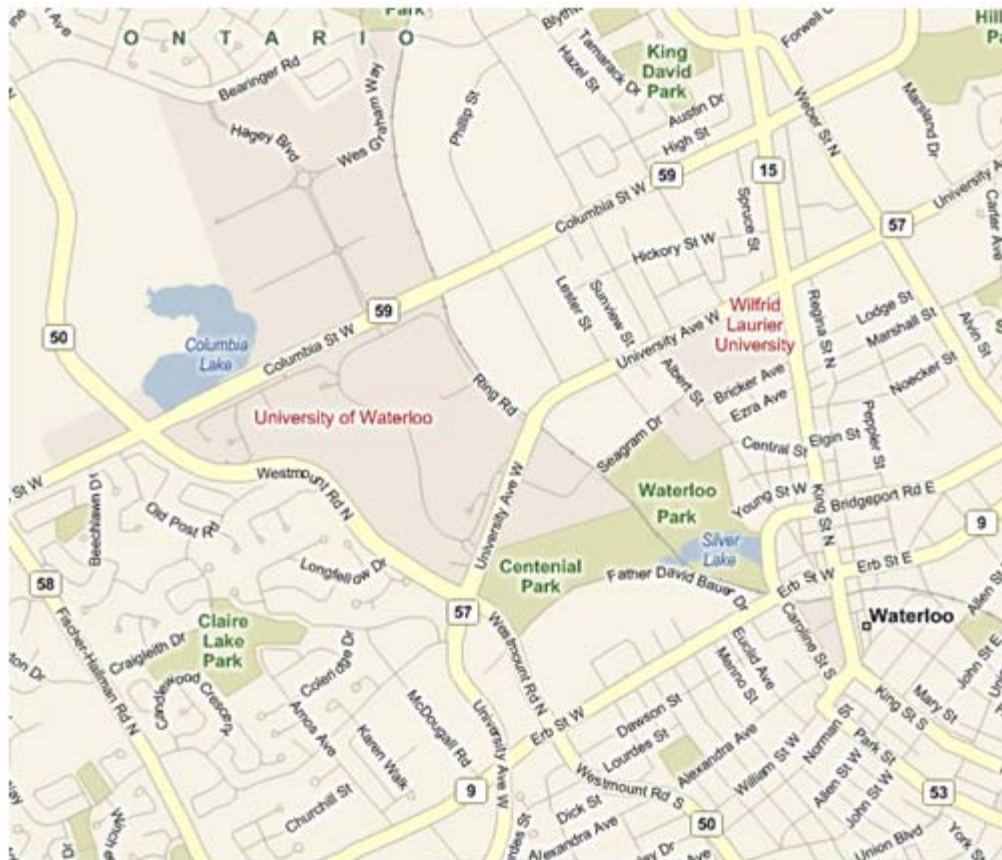
We are interested in locations!

- Our whereabouts – GPS chips
- Geographical settings of novels, location of news events
- Location stamping (geo-tagging) vacations (Flickr) and events (blogs, Facebook)



Visual Literacy

Map reading and map writing are lifelong literacy skills.



- Know how to communicate with maps
- Know that maps exist and where



- We are expected to have map literacy skills.
 - Read a map
 - Create a map
- Society is communicating information in a map format
- To tell a story
- To find patterns
- To find solutions
- To make information clearer



Objective Number Two: Geospatial Literacy Skills

- As library professionals, it is expected that we have developed the visual/mapping literacy skills that our students, faculty and other library users are fluent in
- Well rehearsed in seeing mapping opportunities to communicate information
- Able to point students and faculty to the right resources
- An increase in geographical interest!
 - more faculty are incorporating maps into their courses
 - cross-discipline interests in mapping
 - wider interest in GIS – some people want to go beyond online mapping tools
 - wider interest in GIS-related workshops; wider interest in Map Library Services



Map Literacy on Campus

- How are students and faculty using maps and online mapping resources?



Google Earth

- Source for information on land and people
 - Archaeological information
 - Social and cultural information
 - Urban and commercial development
 - Geographical information
 - Natural disasters and restoration
 - Mapping! Simple and advanced
 - Georeferencing photos and maps – higher resolution or historical
 - 3-D Model building – Sketchup



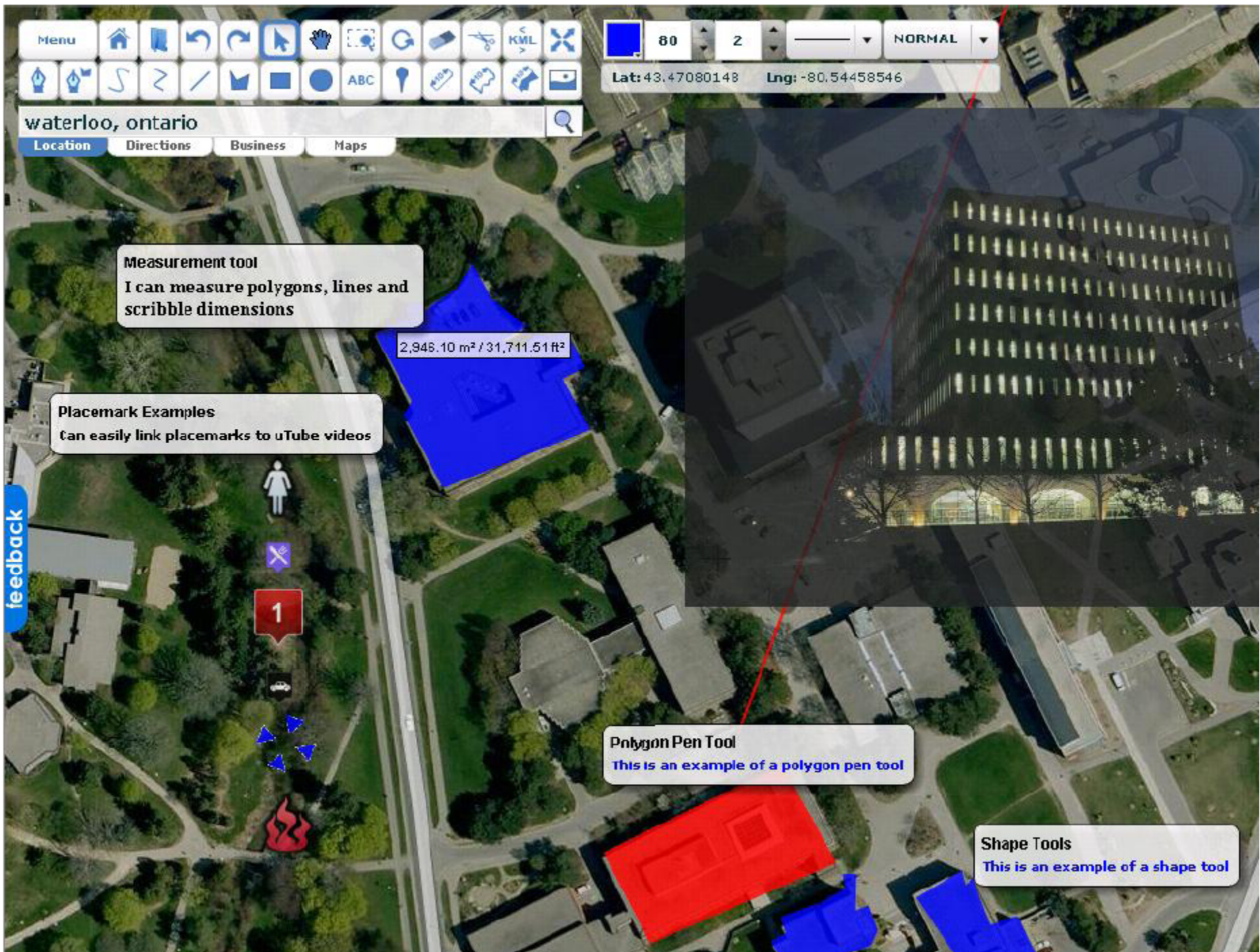
Mapping Tabular Information

- People are interested in mapping addresses, survey results, and points of interests
- Quite popular with the social sciences – mapping the location of respondents
- Excellent product *Google* Fusion allows you to paste your Excel table with address information into the online program and it instantly creates latitude and longitude coordinates for each address in your table.
- You can then view your address ‘points’ in Google Earth, Google Maps, or import your updated Excel table into a GIS program for further analysis



Creating mashups

- We often use other people's mashups, but we can all easily create our own!
- Scribblemaps.com
 - Can scribble, add markers, paths (streets, trails, etc), add tables, add images, add GIS files, add KML! Imbed map into other applications using widgets
- Google Maps, Bing Maps



Measurement tool
I can measure polygons, lines and scribble dimensions

2,946.10 m² / 31,711.51 ft²

Placemark Examples
Can easily link placemarks to uTube videos

feedback

Polygon Pen Tool
This is an example of a polygon pen tool

Shape Tools
This is an example of a shape tool

First row is header



Row	F1	F2	F3	F4	F5	F6	F7	F8	F9
0	Address	City	Province	PostalCo	Name	Phone Nu	WalkDog	Hours_w	Use_lease
1	1250 Mis	Mississau	Ontario	L5A 3R6	John Smi	(518) 86	Y	7	n
2	218 Rive	Toronto	Ontario	M4K 1C5	Sarah Wi	(716) 68	Y	16	y
3	1043 Sky	Oakville	Ontario	L6M 3L2	Robert H	(516) 24	Y	4	n
4	79 Pineh	Kitchener	Ontario	N2N 3J9	Melanie F	(631) 42	Y	1	n
5	111 Woo	Cambridge	Ontario	N1S 2A2	Stephani	(315) 42	Y	5	y
6	47 Coppe	Kingston	Ontario	K7M 1M3	Sheila Br	(718) 47	Y	10	y
7	525 Park	Waterloo	Ontario	N2L 4X7	Mark Stra	(585) 42	Y	8	n

Name:

Header: ▼

Content: ▼

Address: ▼

Latitude: ▼

Longitude: ▼


Start Index: ▲ ▼

End Index: ▲ ▼

Drawing

Use Text Markers

Use Markers



Change Marker

Heat

Random Colors

Draw Lines

Draw Polygon

Draw Circles

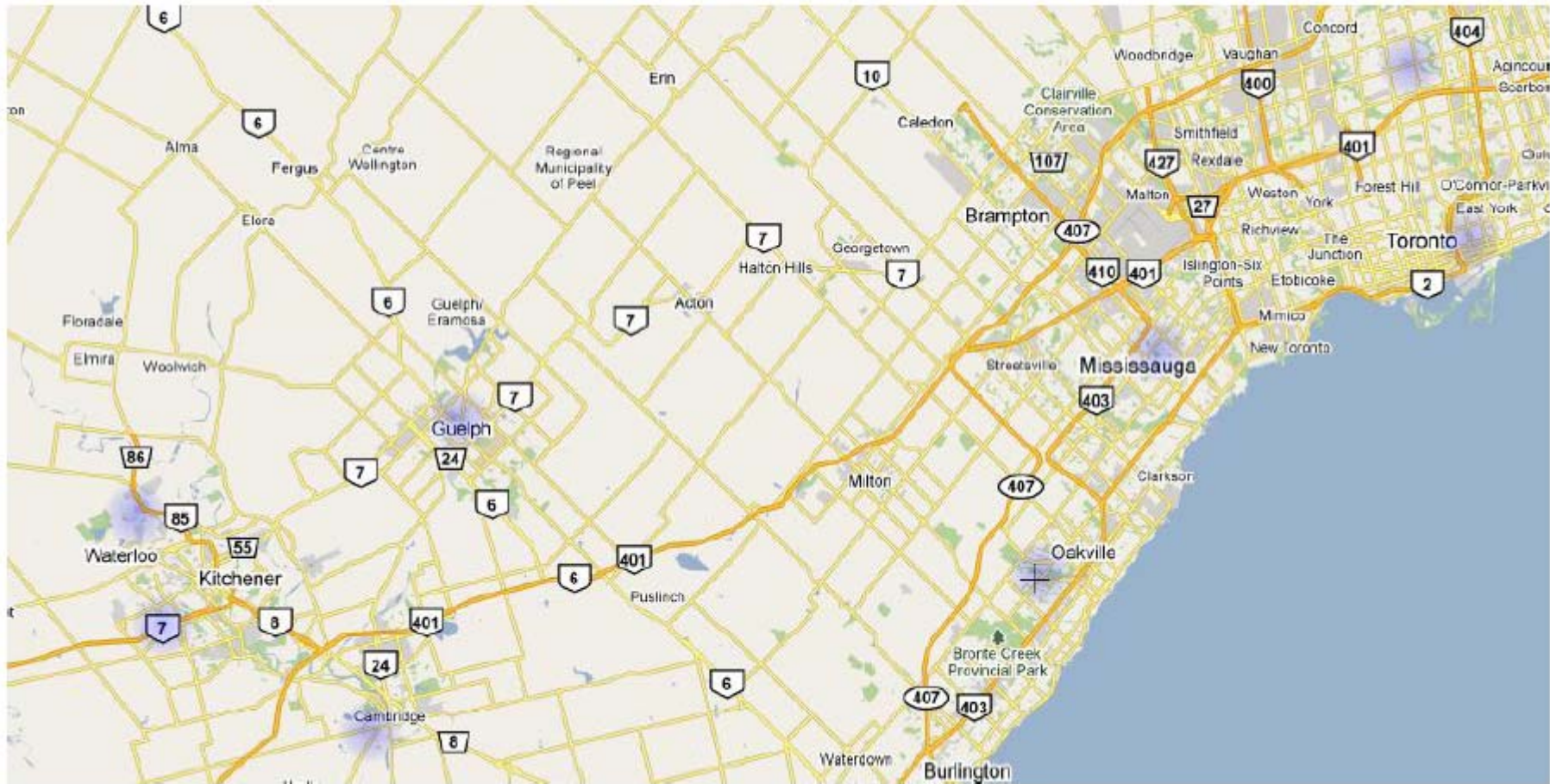
Fixed Size

▲ ▼ ▼

Relative Size

▼ ▼ ▲ ▼

Add To Map



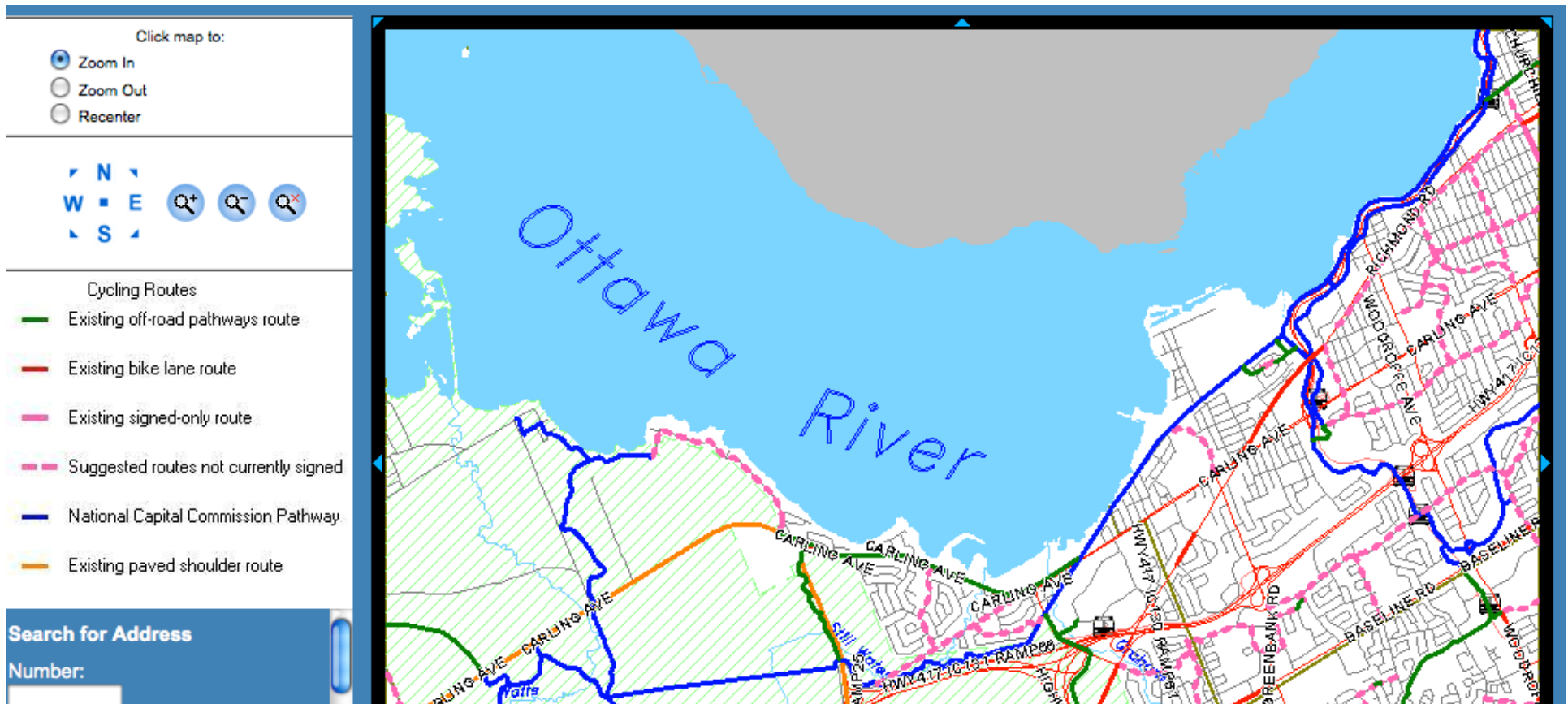
http://www.lib.uwaterloo.ca/locations/umd/digital/Toronto_2009_vector.html

Interactive Mapping

- Government resources available freely online
 - Municipal information (neighbourhood level)
 - Provincial/State level projects (Parks, Soil Surveys, Topography)
 - National Level projects (Census)

Municipal Mapping

City of Ottawa eMap : http://ottawa.ca/residents/emaps/index_en.html



City of Ottawa Interactive Traffic Map

City of Ottawa - Interactive Traffic Map - Windows Internet Explorer

http://traffic.ottawa.ca/

City of Ottawa - Interactive Traffic Map

Residents Visitors City Hall Business Online Services

Home > Residents > Ottawa On the Move > Driving > Traffic > Interactive Traffic Map

Interactive Traffic Map

- Traffic Cameras
- Construction / Events
- Incidents
- Message Signs
- City Parking
- Park and Ride
- Bike Routes
- City Wards
- Red-light cameras

Ottawa Ride Match

OC Transpo

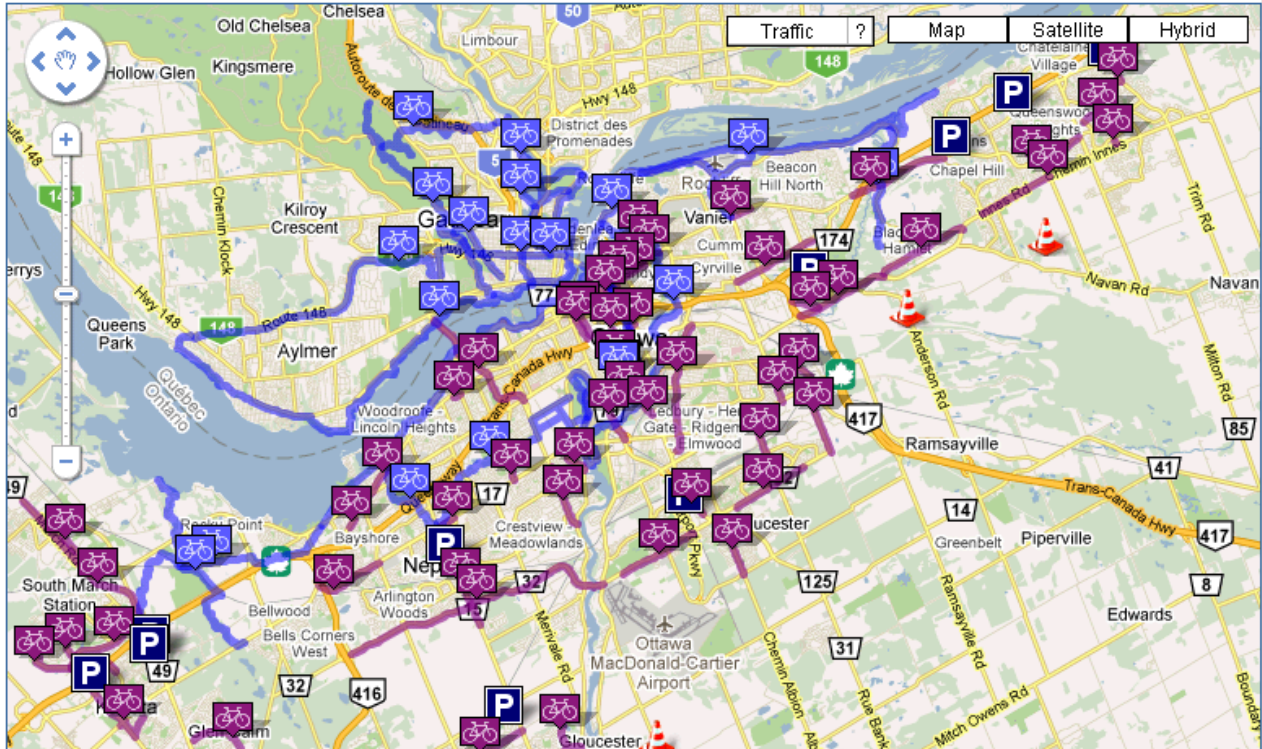
Follow Incidents on Twitter

Traffic Video Camera List

Road Work and Street Closures

Winter Parking

Transit Priority



The map displays the city of Ottawa with various icons overlaid. Blue bicycle icons indicate bike routes, while purple icons represent other traffic-related features. Major roads like Highway 417 and Highway 148 are visible. The map interface includes a navigation wheel, a zoom slider, and map style controls (Traffic, Map, Satellite, Hybrid).

Land Information Ontario (LIO)

Make a Map - Windows Internet Explorer

http://www.lio.ontario.ca/imf-ows/imf.jsp?site=makeamap_en

Land Information Ontario

ABOUT THE MINISTRY | PROGRAMS & SERVICES | PUBLICATIONS | NEWSROOM | FAQ | JOBS | CONTACT US

Home > Land Information Ontario > Make a Map

Map size: S M L XL

About Layers Legend Search Bookmarks

Map Layers

- Administrative Boundaries
 - Municipalities and First Nation Reserves
 - Townships, Land Parcels and Addresses
 - Parks
 - Administrative Districts
- Natural Features
- Constructed Features
- Grids
- Imagery

Refresh Map

Notes:

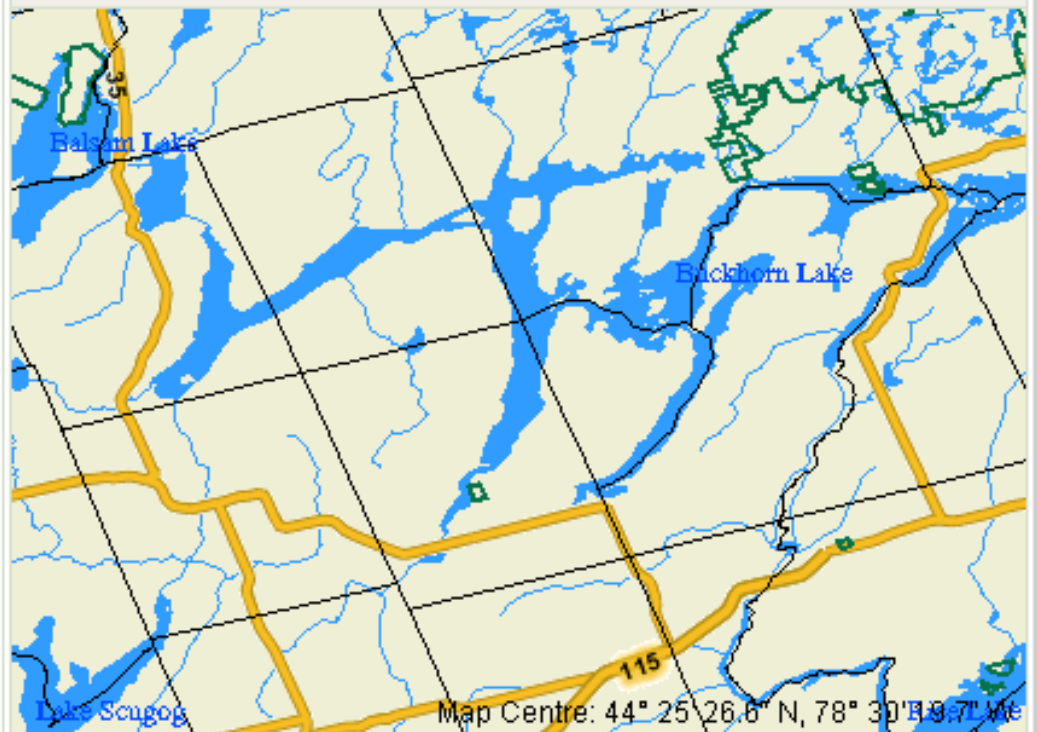
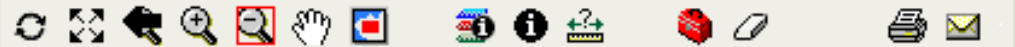
Map Centre: 49° 0' 0.0" N, 84° 45' 0.0" W

Scale: 1: 16,810,549 **go** Map Tool: **Zoom In**

Help Feedback

Legend

-  Province
-  Lakes and Ponds
-  Rivers and Streams
-  Highways
-  Freeways
-  Provincial Parks
-  National Parks
-  Townships
-  Conservation Reserves
-  Pumping Station



Scale: 1: 550,345



Map Tool:  Zoom Out



Historical Mapping

- People across several disciplines are interested in studying historical facts about our land
 - Egyptian and Roman design of streets
 - Bends and sizes of rivers and lakes
 - Changes in political boundaries, and in names
 - Rural and Urban Development – parcel divisions
 - Historical settings read in books and texts

 - Many online sites offer historical maps for viewing and downloading
 - <http://www.davidrumsey.com/>

 - http://www.lib.utexas.edu/maps/map_sites/hist_sites.html#europe



Accessing static maps

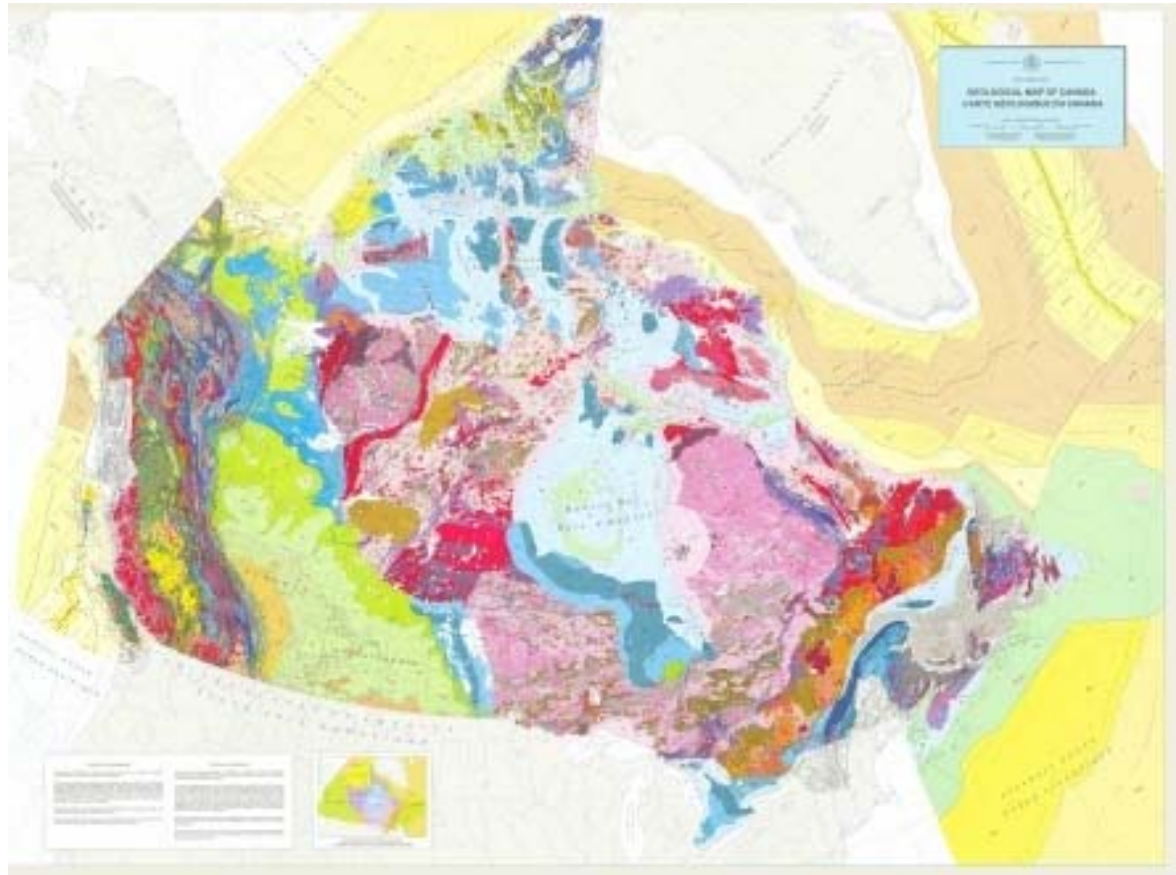
- A wide variety of scanned maps are available for download
- <http://www.geogratis.ca/> - Toporama prototype



Accessing static maps

Geological Survey of Canada :

http://gsc.nrcan.gc.ca/map/1860a/index_e.php





Spatial Data Providers

- Online maps don't meet the needs of all users
- Advanced mapping and analysis is often done in desktop GIS programs – ArcGIS, MapInfo, Manifold, or several open source programs
- Data for these programs are often available from the Map Library, as well as from online resources

Geographynetwork.ca

The screenshot shows the homepage of Geographynetwork.ca. At the top, there is a navigation bar with links for 'Free Resources', 'FAQs', and 'Home'. The main header features the 'geography network canada' logo and the tagline 'access a world of information'. Below this is a secondary navigation bar with links for 'about us', 'data', 'maps', 'solutions', 'standards', and 'publishers'. The main content area is divided into two columns. The left column, titled 'explorer', contains a search interface with two steps: 'Where would you like to explore?' and 'What would you like to discover?'. The right column features a section titled 'Find and share geographic data From Canada's leading data providers', followed by a 'Welcome to GN Canada!' message, a paragraph describing the site as an online resource for finding and sharing geographic content, and several news items including 'What is the Geography Network Canada?', 'Using the Geography Network Canada', and 'May 27, 2009. Full functionality of Geographynetwork website is restored.' At the bottom left, there is a 'Getting Started' section with links for 'Quick Tips For Finding Content', 'Using the Explorer', 'Using Content', and 'Publishing Content'. At the bottom right, there is a note about an 'Address Locator' added to the 'Ontario Road Network' ArcIMS Service.

Free Resources | FAQs | Home

g geography network
canada access a world of information

about us data maps solutions standards publishers

explorer Help

1 Where would you like to explore?

Enter a place name (e.g., Winnipeg):

Or draw a search area

2 What would you like to discover?

Select one or more of the following to narrow your search:

Choose content type:
<All Content Types>

Choose content theme:
<All Content Themes>

Optional Keyword (e.g., river):

Find and share geographic data
From Canada's leading data providers

Welcome to GN Canada!

The Geography Network Canada is an online resource for finding and sharing geographic content, including maps and data, from many of Canada's leading providers.

What is the Geography Network Canada?

Using the Geography Network Canada

Explore the **Data**, **Maps** and **Solutions** on the Geography Network Canada

GeographyNetwork Canada Statistics:

2006 2007 2008 2009

What's New?

May 27, 2009. Full functionality of Geographynetwork website is restored. All ArcIMS Services, including OBM, ORN websites are available now.

Nova Scotia Base Map Data Available on the Geography Network Canada - ESRI Canada is pleased to announce the availability of Nova Scotia Base Map Data as ArcIMS Service! This data may now also be downloaded in a variety of format using the **ArcIMS Data Delivery Extension**.

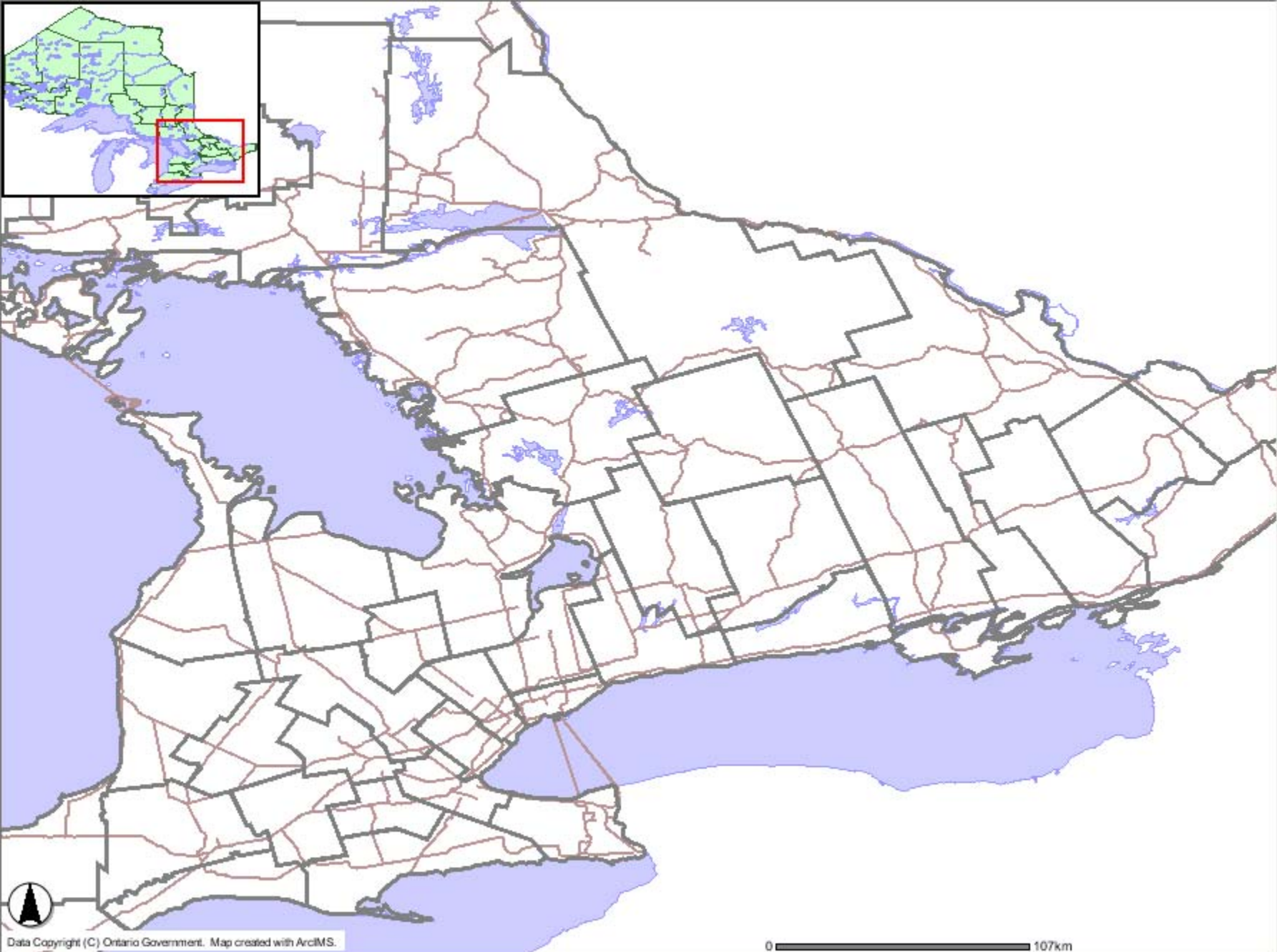
Address Locator added to **Ontario Road Network** ArcIMS Service.

Getting Started

Quick Tips For

- ▶ Finding Content
- ▶ Using the Explorer
- ▶ Using Content
- ▶ Publishing Content

Ontario Basic Mapping (OBM)

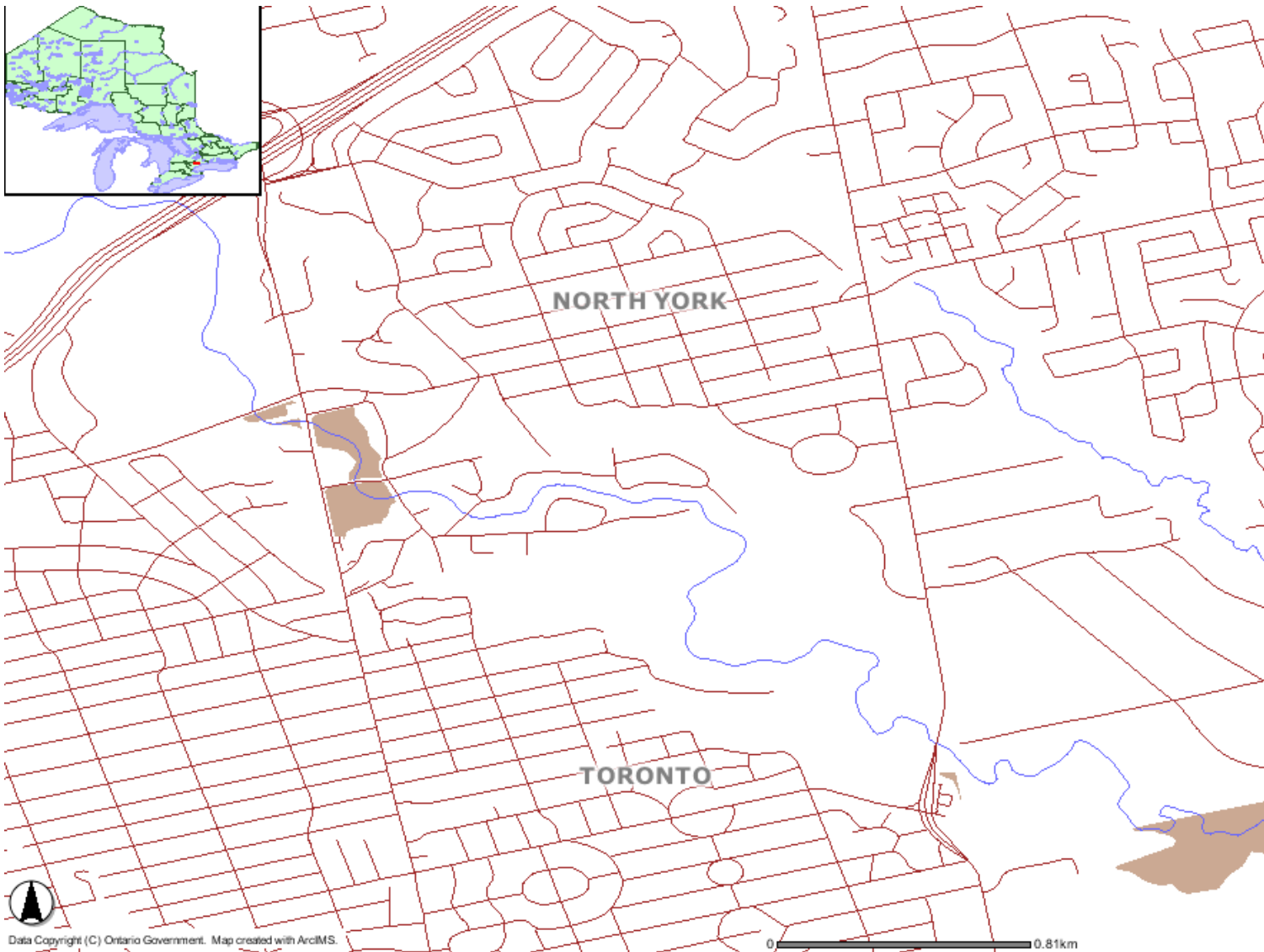
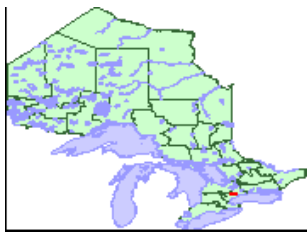


Help
and
How to
download
data



Data Copyright (C) Ontario Government. Map created with ArcIMS.

0 107km



Data Copyright (C) Ontario Government. Map created with ArcIMS.

- Drainage Lines
- Water Structure
- Water Segments (Northeast)
- Water Segments (Northwest)
- Water Segments (South Central)
- Miscellaneous Lines
- Airport Runways
- Building Footprints
- Mines
- Pits and Quarries
- Tanks
- Conservation Authority Areas
- Concessions
- Lots
- Water Polygons (Northeast)
- Water Polygons (Northwest)
- Water Polygons (South Central)
- Municipal Parks
- Conservation Reserve Regulated
- Conservation Areas
- National Parks
- National Wildlife Areas
- Provincial Parks
- NGO Nature Reserves
- Wetlands
- Wooded Areas
- Land Ownership

Refresh Map



If your email is not edodswor@library.uwaterloo.ca please click on [Login](#)

Extent:

Clip Data Export Selected Set

[Set Visible Extent](#)

Lower-Left X:

Lower-Left Y:

Upper-Right X:

Upper-Right Y:

Download Format:

▼

Layers:

Coordinates:

▼

License and Agreement

I Agree

[Download Data](#)

The data sets or information contained in this site is the property or copyright of the Government of Ontario. Any use of the data sets or information contained in this site shall be at the sole risk of such user regardless of the form of use. In no event shall ESRI Canada Limited or the Government of Ontario, its officers, employees, agents, contractors and all other contributors become liable to the user or any other person for any losses or damages whatsoever, incurred in connection with the use of the data sets or information contained in this site regardless of the form of action. The user of the data sets or information contained in this site agrees to indemnify ESRI Canada Limited and the Government of Ontario its officers, employees, agents, contractors and all other contributors for any losses or damages resulting to ESRI Canada Limited or the Government of Ontario from any use of the data sets or information contained in this site.

ESRI Canada is not a data provider or the custodian of the data. ESRI Canada does not warrant that the data shall be free of nonconformities, defects, errors or omissions or that use of the data shall meet the expectations of the user. ESRI Canada does not warrant the quality of the data including but not limited to the accuracy, currency, precision of the data. The data is provided "as is". ESRI Canada provides no warranties with respect to the data and disclaims all warranties with respect to the data whether or not implied by law including but not limited to warranties relating to fitness for a particular purpose, non interference, system integration and non - infringement.



Open Access to Data

City of Toronto Open Data

<http://www.toronto.ca/open/catalogue.htm#g>

City of Vancouver Open Data

<http://data.vancouver.ca/>

City of London Open Data

http://www.london.ca/d.aspx?s=/Open_Data/default.htm

Open data home

Get the data

 Data catalogue
 City web feeds

About the data

 Data formats
 Data updates
 Terms of use

Feedback

Google Chrome

Google Chrome does not currently support FTP download access. If you are using the Chrome browser and trying to download a dataset from the catalogue you may see the error "file not

Data catalogue

A B C D E F G H I J K L M N O P Q R S T U V W X Y Z

Name & Information about Data	CSV	XLS	DWG	KML	SHP	ECW	Mr SID	Google Maps	Bing Map
A									
Address labels for map display			✓ DWG	✓ KML	✓ SHP				
Alleyways			✓ DWG	✓ KML	✓ SHP			G	
Apartment recycling schedule zones			✓ DWG						
Art									
B									
Bikeways			✓ DWG	✓ KML	✓ SHP			G	
Bike lane stats (2009 & 2010) - Burrard Bridge		✓ XLS							
Bike lane stats (2009 & 2010)		✓							

B [Back to top](#)
Bicycle Count and Locations

ESRI Shapefile, XLS

September 2010

These files provide the locations of where the September 2010 Bicycle Counts were collected as well as the results at each location.

Bikeways

ESRI Shapefile, WGS84

March 2011

The Toronto bikeways data contains bicycle lanes, signed bicycle routes and pathways.

Business Improvement Areas

ESRI Shapefile, WGS84

May 2010

Boundaries for the active Business Improvement Areas within the City of Toronto.

C [Back to top](#)
City Wards

ESRI Shapefile, WGS84

May 2010

Boundaries for the City of Toronto's 44 municipal wards.

Current Value Assessment (CVA) Tax Impact Residential Properties New

ESRI Shapefile, WGS84

2011

This outlines the current tax year phased-in average Current Value Assessment (CVA) tax impact on residential properties



If library users are utilizing all of these web mapping resources, shouldn't library staff do the same?



How are Library Staff Using Web GIS?

- Creating maps!
- Digitizing Library Collections
- Promoting and Delivering Library Collections
- Teaching and training students, faculty and other library users
- Reference services
- Course liaison responsibilities
- Administration
- As a communication and information tool



Showing Library Locations

Brock

[About Brock University](#) [Academics](#) [Admissions](#) [Research](#) [Services](#) [Contact Us](#)

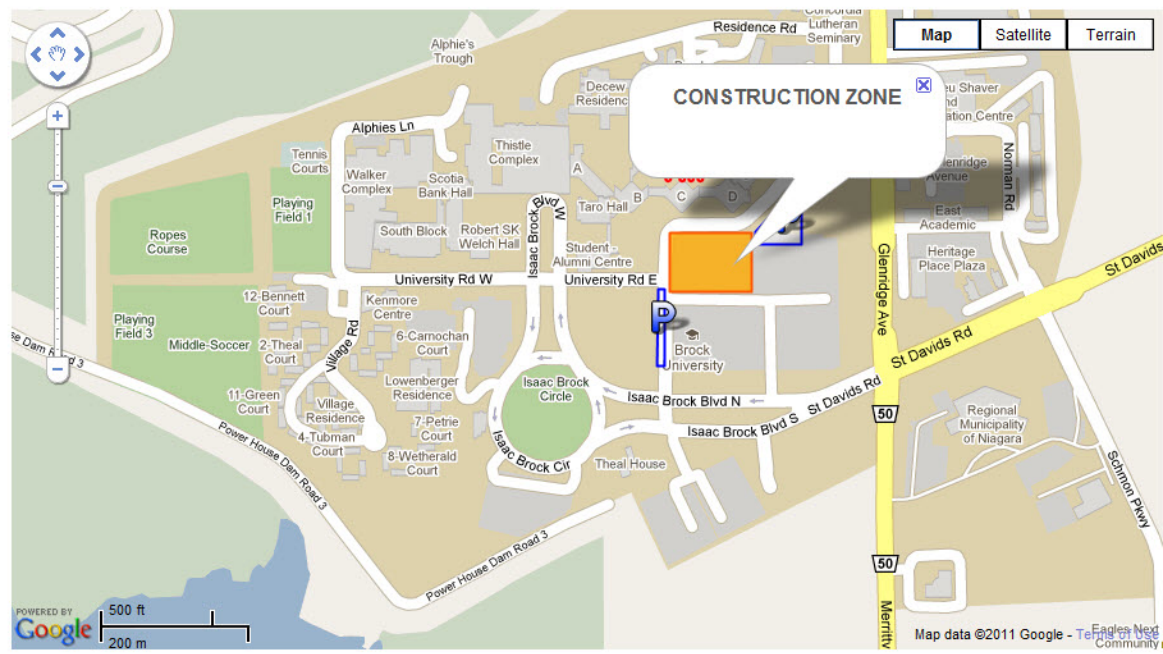
Quick Links

[Brock Home](#) » [James A. Gibson Library](#) » [Map Library](#)

[HOME](#) [FIND US](#) [SERVICES](#) [WORKSHOPS](#) [HELP GUIDES](#) [COLLECTIONS](#) [MAPS FOR SALE](#)

Where is the Map Library?

- > [Click on a polygon to view details](#)
- > [Click HERE to get directions to the campus](#)
- > [Click here for a printable campus map](#)



<http://www.brocku.ca/maplibrary/general/where-is-the-ML.php>



University of North Carolina



Libraries & Collections

Aging
(919) 966-9444 | Hours
[Show on the map](#)

Art Library
(919) 962-2397 | Hours
[Show on the map](#)

Biology
(919) 962-2264 | Hours
[Show on the map](#)

Carolina Digital Library and Archives (CDLA)
(919) 962-9590
[Show on the map](#)

Carolina Pop. Center
(919) 962-3081 | Hours
[Show on the map](#)

Carolina Women's Center
(919) 962-8305 | Hours
[Show on the map](#)

Chemistry
(919) 962-1188 | Hours
[Show on the map](#)

Data Services
(919) 962-1151 | Hours
[Show on the map](#)

Davis (Main)
(919) 962-1053 | Hours
[Show on the map](#)

Digital Collections
[Show on the map](#)

General Manuscripts
(919) 962-1345 | Hours
[Show on the map](#)

Geological Sciences
(919) 962-2386 | Hours
[Show on the map](#)

GIS
(919) 962-1151 | Hours
[Show on the map](#)

Law
(919) 962-1321 | Hours
[Show on the map](#)

Maps Collection
(919) 962-1151 | Hours
[Show on the map](#)

Marine Sciences
(252) 726-6841
[Show on the map](#)

Math/Physics
(919) 962-2323 | Hours
[Show on the map](#)

Media Resources Center
(919)-962-2559 | Hours
[Show on the map](#)

Microforms Collection
(919) 962-2094 | Hours
[Show on the map](#)

Music
(919) 966-1113 | Hours
[Show on the map](#)

North Carolina Botanical Garden
(919) 962-0522 | Hours
[Show on the map](#)

North Carolina Collection
(919) 962-1172 | Hours
[Show on the map](#)

NCC Gallery
(919) 962-1172 | Hours
[Show on the map](#)

Odum Institute
(919) 962-3061
[Show on the map](#)

Photographic Archives
(919) 962-1172 | Hours
[Show on the map](#)

Rare Book Collection
(919) 962-1143 | Hours
[Show on the map](#)

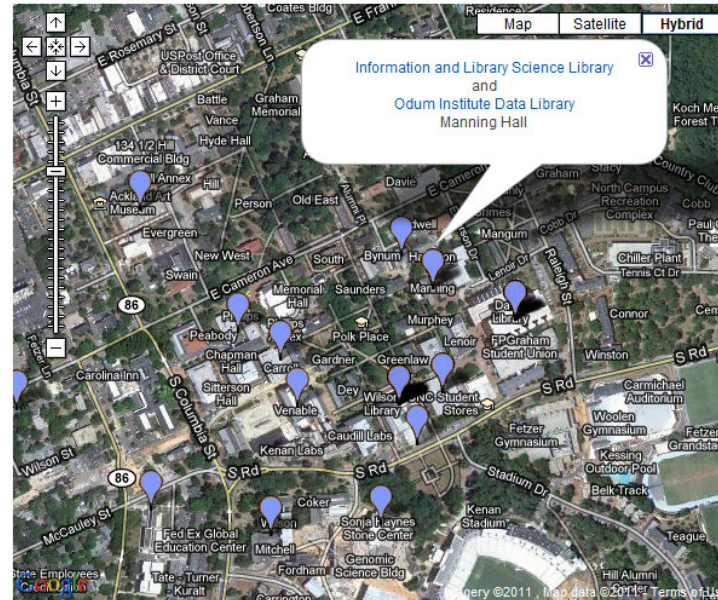
Request a Title for Purchase

[University Library](#) | [Health Sciences Library](#) | [Law Library faculty](#) | [Law Library non-faculty](#)

[Donating Materials to the University Library](#)

[Make a Gift - Be A Friend of the Library](#)

Map of the Libraries



[View Alternate Map](#)



San Diego Public Library

THE CITY OF SAN DIEGO

Business | City Hall | Community | Departments | Information | Leisure | Services A-Z | Visiting

PUBLIC LIBRARY HOME | ABOUT THE LIBRARY | SERVICES | CATALOG & DATABASES | NEWS & EVENTS | CITY LIBRARY LOCATIONS | SEARCHING THE INTERNET

San Diego Public Library

Locations and Hours

Branch hours:
Tue-Wed 12:30-8:00
Thu-Fri 9:30-5:30
Sat 9:30-2:30
La Jolla, Pt. Loma, & Serra Mesa open Sun 1:00-5:00

Central hours:
Mon, Wed 12:00-8:00
Tue, Thu, Fri 9:30-5:30
Sun 1:00-5:00

Library locations
[Central](#)
[Allied Gardens/Benjamin](#)
[Balboa](#)
[Carmel Mountain](#)
[Carmel Valley](#)
[City Heights/Weingart](#)
[Clairemont](#)
[College-Rolando](#)
[Kensington/Normal Heights](#)
[La Jolla](#)
[Linda Vista](#)
[Logan Heights](#)
[Mira Mesa](#)
[Mission Hills](#)

San Carlos Library
7265 Jackson Dr.
San Diego CA 92119
(619) 527-3430

[Directions](#)

Map | Satellite | Hybrid

POWERED BY Google

[List of all San Diego Public Library locations and hours](#)

[Printable map of Library Locations \(PDF\)](#)

For special hours during holidays, please visit the [Holiday Hours](#) page.

Map of [Serra Library Cooperative](#) locations, including San Diego, Chula Vista, Carlsbad, SD County, and other area public library systems.

[SDPL Around the Web](#) has Friends groups, Facebook, and other library online communities.

<http://www.sandiego.gov/public-library/locations/>



St. Paul Public Library

Special Appearances

If your organization or community event is interested in hosting the Bookmobile, please call 651-266-7450.

Map



Blue Week stop

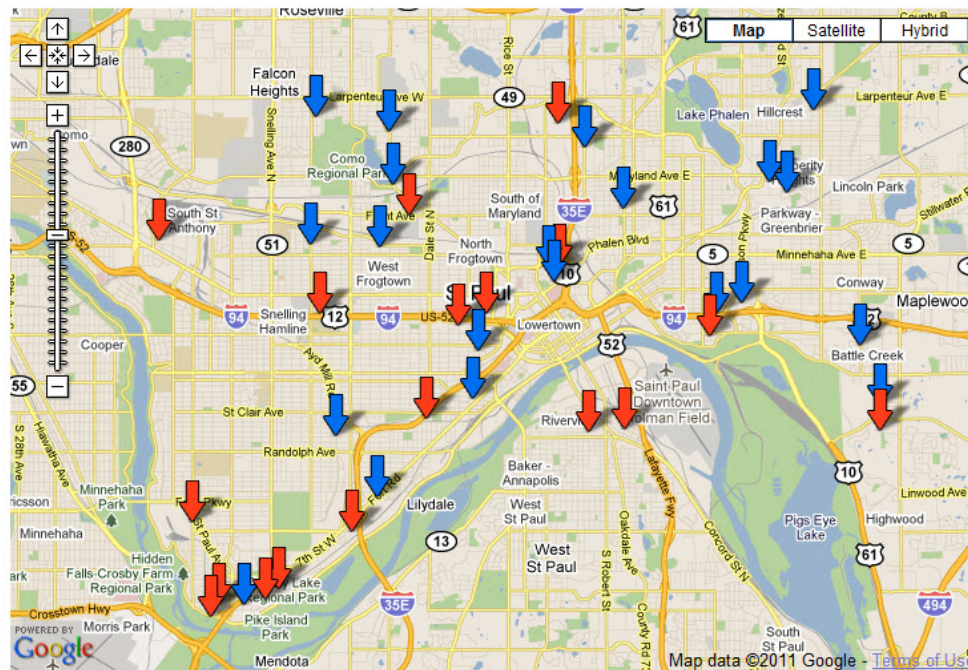


Red Week stop



Red Week AND Blue Week stop

BookMobile Locations & Schedule



- Afton View Apartments
- Ames Lake Neighborhood
- Cerenity Humboldt
- Cerenity Marian
- Chelsea Heights/N.W. Como
- Cleveland Hi-Rise

<http://www.sppl.org/locations/bookmobile.html#map>



Resource Sharing

University of Vermont Library

The University of Vermont :: UVM Libraries

THE UNIVERSITY OF VERMONT UVM Libraries' Center for Digital Initiatives cdi

Home UVM Libraries About News Browse the Collections Search Go Advanced Search

Long Trail Photographs

About the Collection View All Items Browse the Collection Search the Collection

Browse the collection by:

Format(s)

- landscape photographs [384]
- lantern slides [918]
- photographs [918]

Topic(s)

- Animals [33]
- Barns [1]
- Bliss, Fred [2]
- Boats and boating [11]
- Bridges [8]
- Burnham, Lyman [14]
- Burnham, Rogers [7]
- Camping [181]
- Canoes and canoeing [6]
- Carpenter, Grace [1]

More...

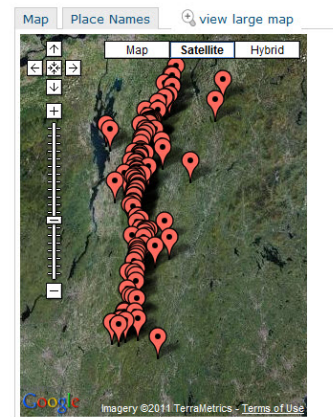
Creator(s)

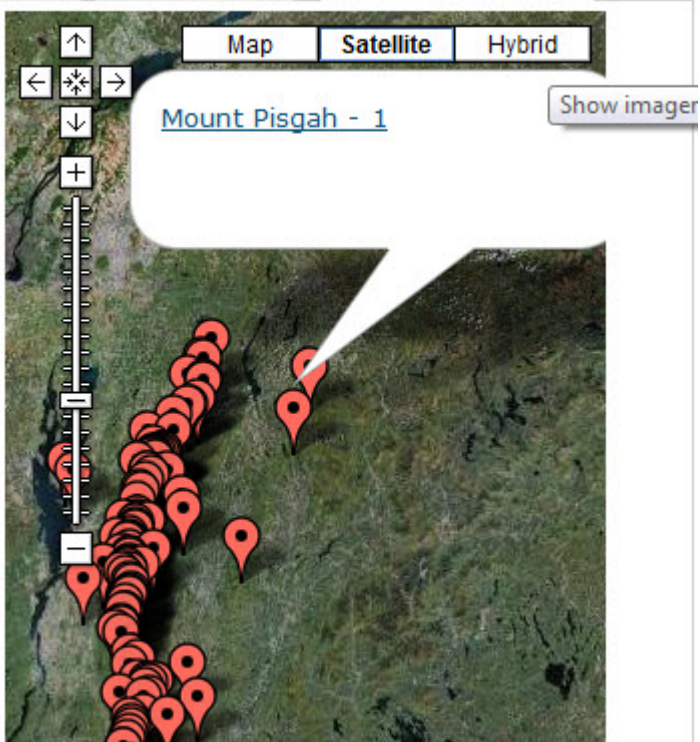
- Bentley, W. A. (Wilson Alwyn), 1865-1931 [1]
- Bliss [2]
- Bliss, J. Isham [2]
- Bosan, Mrs. [1]
- Brehmer [5]
- Brounell, L.W. [1]
- Buchanan, R.O. [2]
- Burrows, Jes [1]
- Chamberlain, Allen, b. 1867 [5]
- Charles Beseler Co. [6]

More...

Digitized Photo Collection, Geotagged and make available online

<http://cdi.uvm.edu/collections/browseCollection.xql?pid=longtrail&title=Long%20Trail%20Photographs>





University of Vermont Photograph Collection



THE UNIVERSITY
OF VERMONT

UVM Libraries' Center for Digital Initiatives



Pulpit Rock on Mount Pisgah from the South

Image Size:

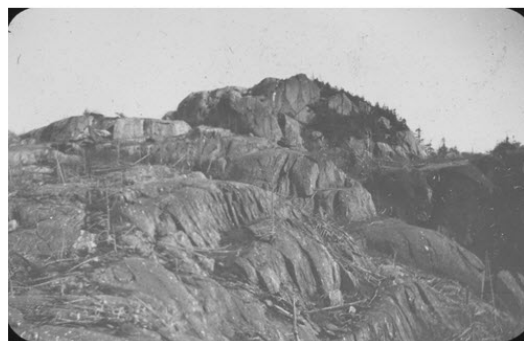


Image Size:

Description

Title

Pulpit Rock on Mount Pisgah from the South

Creator

Dean, Theron S.

Description

...

[See full description](#)

Parent Collection

[Long Trail Photographs](#)

[See it on a map](#)

University of North Carolina Air Photo Collection



UNC
UNIVERSITY LIBRARIES

GEOGRAPHIC INFORMATION SYSTEMS (GIS) SERVICES: USDA HISTORICAL AERIAL PHOTOS

[Go back to...](#)

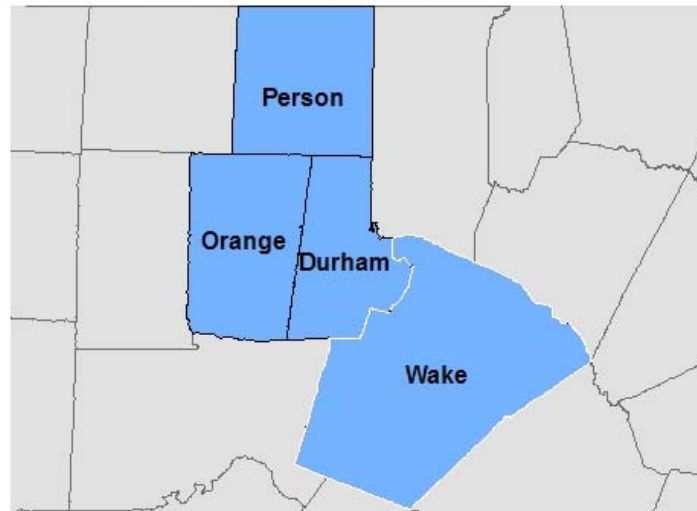
[GIS Services](#)

[Contact ?](#)

[Amanda Henley](#) GIS Librarian

USDA Historical Aerial Photos - North Carolina: 1930s through 1970s

To begin, please select your county of interest on the map.



Slide 1/3

GEOGRAPHIC INFORMATION SYSTEMS (GIS) SERVICES: USDA HISTORICAL AERIAL PHOTOS

Instructions

Find the aerial photos that cover your area of interest in the map to the right.

Look for images with these labels:



Download your images by choosing from the download options below.

[Questions? Click here.](#)

Download Imagery

Choose the images that you need from the pull down menus.

12- Images ▾	13- Images ▾
14- Images ▾	15- Images ▾

View a [complete list of links](#) to these images. Use a [download manager](#) to download them all at once.

Wake County, NC 1938

Display Map Apply transparency

A map of Wake County, North Carolina, showing historical aerial photos overlaid on a modern map. The map includes major roads like I-85, I-40, I-77, and I-95, and cities like Durham, Chapel Hill, and Raleigh. The historical photos are shown as a dark, textured area covering a large portion of the county. A search bar at the top right contains the text 'Map'. A vertical toolbar on the left side of the map contains various navigation and zoom controls. At the bottom of the map, there is a 'POWERED BY Google' logo and a copyright notice: 'Map Data ©2011 Google, Map Data: NC Maps - Terms of Use'.

Wake County, NC 1938



Digitizing and Georeferencing Fire Insurance Plans

North Carolina **MAPS**

Advanced Search | GeoSearch

[Browse](#) [K-12](#) [Interactive](#) [Sanborn Maps](#) [Learn More](#) [About this Project](#)

NC Maps > [Historic Overlay Maps](#) > Central Part of Wilmington, circa 1882


Central Part of Wilmington, circa 1882

Using the interface below, users can compare a historic map from the *North Carolina Maps* project with a current map or satellite image.

MAP CONTROLS

- Turn Historic Map On/Off
- Fade Historic Map

[View original map](#)
[Help with this page](#)
[Open in Google Earth](#)



Original map: "Central Part of Wilmington, N.C." Philadelphia: O.W. Gray & Son, 1882. North Carolina Collection call number Cm912c W74 1882.

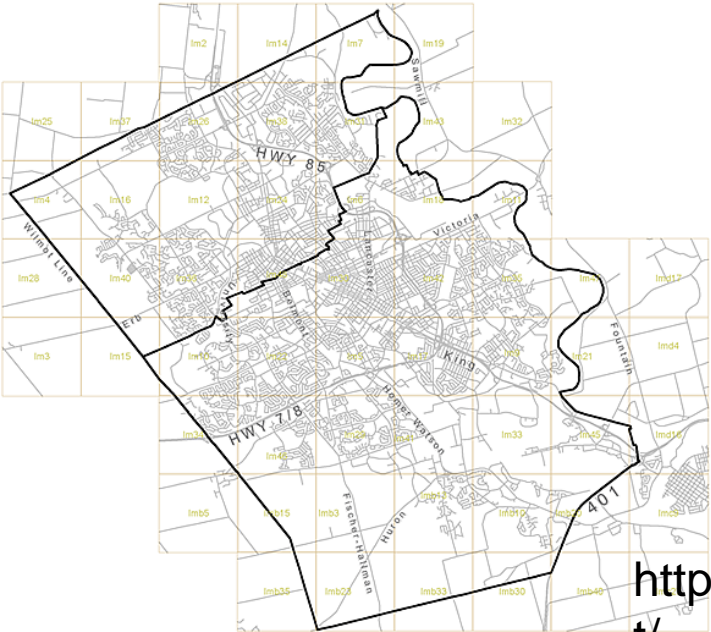
University of Waterloo Historical Air Photo Project

[Documentation](#)
[GIS Shapefiles](#)
[Project Home Page](#)
[Map Library](#)



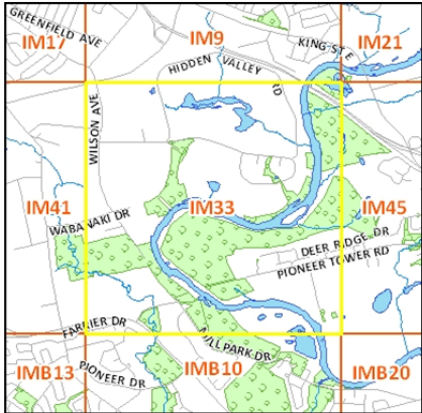
Digital Historical Air Photos of Kitchener - Waterloo

This index represents the full coverage of digital aerial photography available for viewing and downloading. Each image is bounded by the tile represented above and is linked from this index. If more than one year is available for the tile, it will appear on the corresponding webpage. Please click on your area of interest to view image information and to access the photos. 1945 mosaics have also been created for [West Waterloo](#), [Uptown Waterloo](#), [Downtown Kitchener](#), [South Kitchener](#) and [East Kitchener](#).



<http://www.lib.uwaterloo.ca/locations/umd/project/>

Photo: IM33



Click on an adjacent tile for corresponding page



Cleveland State University Libraries present

Find Images

GO

the Cleveland Memory Project

:: Advanced Image Search

engaging our students & community to improve the civic life of Northeast Ohio

HOME :: BROWSE WEB EXHIBITS :: READ E-BOOKS :: OUR DONORS :: ORDER PRINTS :: CONTACT US

Available Landmark Categories:

[BRIDGES](#)

[HOSPITALS](#)

Search the HLNEO
website:

Google™ Custom Search

Search

Historic Landmarks of Northeast Ohio

Welcome

Landmarks anchor us in time and place giving structure to our lives today and to our memories of the past.

HLNEO provides you with various ways to locate information about northeast Ohio landmarks. We have divided the landmarks into different categories listed in the area on the left.

Within each category, you can search for landmarks either by:

❖ Landmark Name -

- ❖ Browse an alphabetical list
- ❖ Search our database (planned for the near future)

OR

❖ Landmark Location using -

- ❖ A simple Google Map
- ❖ A GIS with which you can perform geographic selections & correlations
- ❖ Google Earth with which you can view selections in 3D

For a unique look at some of Cleveland's landmarks, visit Google's [3D Warehouse](#).



[Questions/Comments?](#)

Cleveland Memory is a collaborative effort of the
Special Collections Dept., Digital Processing Unit, Technical Services Dept. & Systems Division at the
Michael Schwartz Library, Cleveland State University · 2121 Euclid Avenue · Cleveland, Ohio 44115 · (216) 687-2449
Copyright ©2002- 2011

Slide 1/3

Cleveland State University Libraries present

Find Images



the Cleveland Memory Project

:: Advanced Image Search

engaging our students & community to improve the civic life of Northeast Ohio

HOME :: BROWSE WEB EXHIBITS :: READ E-BOOKS :: OUR DONORS :: ORDER PRINTS :: CONTACT US

Available Landmark Categories:

[BRIDGES](#)

[HOSPITALS](#)

[Back to HLNEO home](#)

Search the HLNEO
website:

Google™ Custom Search

Search

Historic Landmarks of Northeast Ohio

Bridges

Search for information on bridges using the following tools:

- ❖ [User Friendly Map: Google Map](#)
- ❖ [Google Earth version](#)
(must have Google Earth installed)
- ❖ [Sophisticated GIS Map](#)
 - ❖ [Help with GIS Map](#)
- ❖ [Browse an Alphabetical List](#)
- ❖ [Wikipedia entry on Bridge structure and identification](#)



[Station Road Bridge](#)

Historic Bridges of Northeast Ohio Google Map

HLNEO HOME | BRIDGES

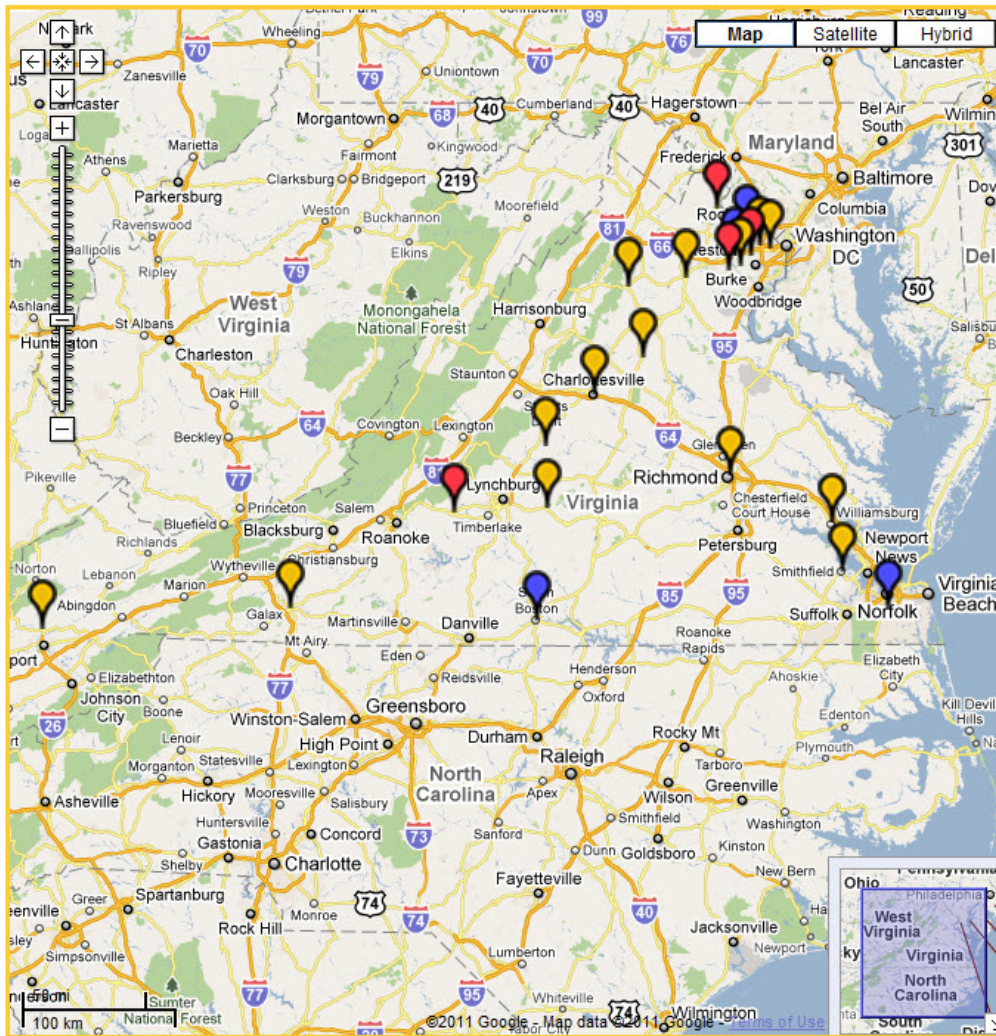


Historic Bridges of Northeast Ohio Google Map

HLNEO HOME | BRIDGES



Folklore Stories of Virginia Example



Years 1979 - 1990

[Stories](#) [Video](#)
[Audio](#)

- 1979-007 - Arts: Urban Potter
- 1979-005 - Place
- 1987-010 - Music
- 1980-166 - Architecture

Years 1991 - 2000

[Stories](#) [Video](#)
[Audio](#)

- 1999-084 - Customs: Family
- 1994-004 - Place: Franklin, Virginia
- 1996-023 - Narratives: Ghosts
- 1996-058 - Narratives: Supernatural
- 1998-003 - Narratives: Ghosts
- 1999-015 - Festivals
- 1999-029 - Narratives
- 1998-013 - Narratives: Personal: Ghosts

Years 2001 - 2010

[Stories](#) [Video](#)
[Audio](#)

- 2006-017 - Story 1
- 2006-019 - Richmond Highland Games
- 2003-093 - Narratives
- 2002-044 - (Fieldworker: O'Donnell, Shannon)
- 2002-056 - (Fieldworker: Martin, Susan)
- 2005-020 - Occupation
- 2006-013 - Personal Narrative
- 2006-020 - Foodway:

Years 1979 - 1990

Stories Video
Audio

- 1979-007 - Arts: Urban Potter
- 1979-005 - Place
- 1987-010 - Music
- 1980-166 - Architecture

Years 1991 - 2000


Stories Video
Audio

- 1999-084 - Customs: Family
- 1994-004 - Place: Franklin, Virginia
- 1996-023 - Narratives: Ghosts
- 1996-058 - Narratives: Supernatural
- 1998-003 - Narratives: Ghosts
- 1999-015 - Festivals
- 1999-029 - Narratives
- 1998-013 - Narratives: Personal: Ghosts

Years 2001 - 2010

Stories Video
Audio

- 2006-017 - Story 1
- 2006-019 - Richmond Highland Games
- 2003-093 - Narratives
- 2002-044 - (Fieldworker: O'Donnell, Shannon)
- 2002-056 - (Fieldworker: Martin, Susan)
- 2005-020 - Occupation
- 2006-013 - Personal Narrative
- 2006-020 - Foodway: Canning
- 2007-014 - Material Culture
- 2007-014 - Material Culture



Northern Virginia Folklife Archive

Charm Bracelets: Objects of Memory

2005-029--Crystal Pruitt

This paper is property of the Northern Virginia Folklife Archive. Users are required to cite NVFA, paper ID number, and author.

Introduction History and Fieldwork Data Analysis Works Cited Links

Introduction

Charm bracelets have long been a source of fascination for me. I can remember that as a little girl I used to play with my mother's bracelet whenever she pulled it out of the special spot she had made for it inside of her jewelry box. She would do so on rare occasions, times when just the two of us were in her room. As I grew older, I would carefully look each one of her charms over with an eye for understanding the person that my mother was before I had entered her life. The charms spanned from the time she was a teenager up until my older brother was born. Sometimes my mother would share stories embodied by charms on her bracelet and I listened intently because it was such an unusual thing for my mother to open herself up to me. Looking back, I suspect that she didn't seem to be a connection between the charms that my father and I viewed charms as possessing supernatural powers. I initially dismissed the research by looking through folklore encyclopedias and dictionaries. I then turned to the Internet to see what that might yield. There were some histories some featured were incomplete, but I could make use of. The histories some featured were incomplete, but I could make use of. The histories some featured were incomplete, but I could make use of.

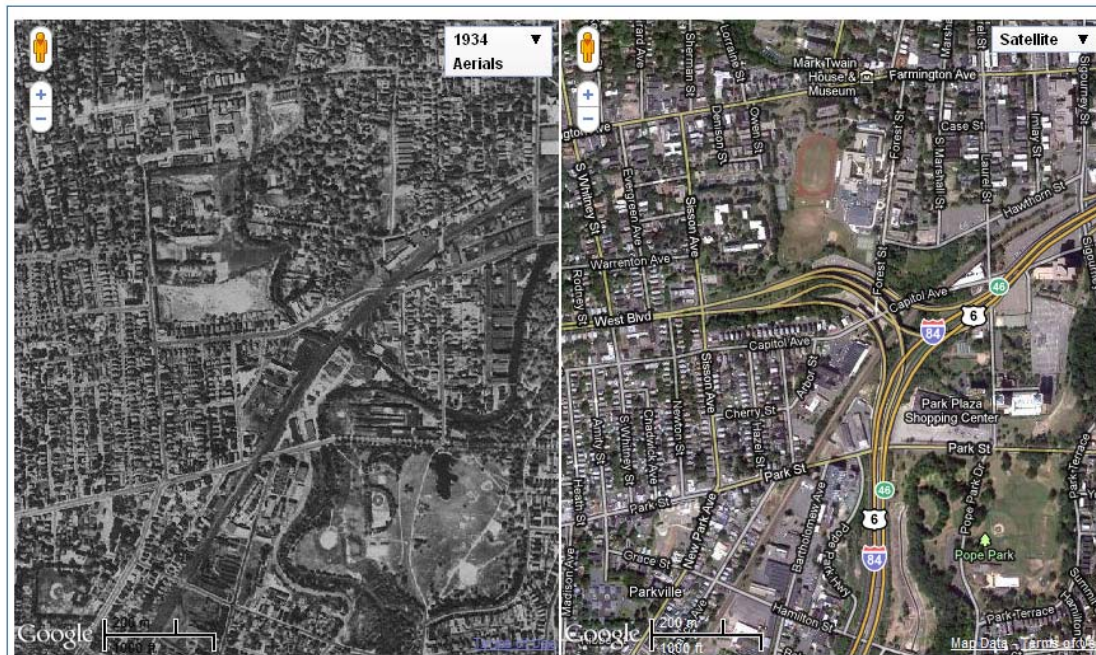
My next stop on the path of research was the Arlington Public Library. However, not one of them was on the shelf where I could have expected. One went off to try to find my missing books. The other remained in the library. We consulted the Library of Congress's online catalog. She then conducted a search on a database of magazine articles. It seemed like it might be the plagiarized source for all of the incomplete information. The two suggested that I either pursue with their latter suggestion. My expectations for the books were not high. My expectations for the books were not high.

When I looked for scholarly articles on objects of memory, I returned to the Internet. I found an article titled "Collecting Oneself: Life Stories and Objects of Memory from a Biographical Perspective." This article posited that these objects tell a reference to an article I had recently read for class, titled "Objects of Memory: A Biographical Perspective." This article posited that these objects tell a reference to an article I had recently read for class, titled "Objects of Memory: A Biographical Perspective." This article posited that these objects tell a reference to an article I had recently read for class, titled "Objects of Memory: A Biographical Perspective."





Neighborhood Change in Connecticut 1934 to Current Year



Type any Connecticut address into the address box below to compare aerial photographs from two periods in time. Examples:
750 Capitol Ave, Hartford CT -- see the influence of 1960s interstate highway development on urban neighborhoods (such as the I-84 exchange in Hartford's Parkville area)
345 N Main St, West Hartford, CT -- see the influence of postwar housing and commercial development (such as the Bishop's Corner area of West Hartford)
Read more in [On The Line](#).

Use the search box below to locate an address in Connecticut.
750 Capitol Ave Hartford, CT

Toggle map layers
 CT Towns

http://magic.lib.uconn.edu/otl/neighborhood_change.html

McMillan Memorial Library, Wisconsin – Cemetery Locations



McMillan Memorial Library

Wood County Cemetery Locations and Maps

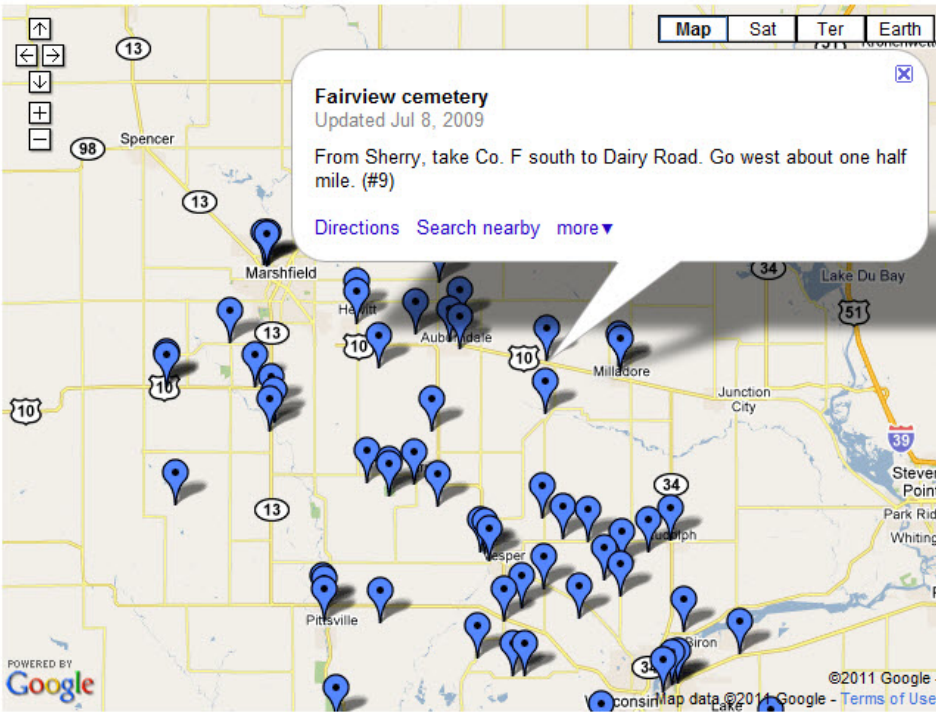
Search Library Catalog Author (Last, First)

Library / Programs ▾ On-Line Resources ▾ Quick Links ▾ History/Genealogy ▾ Local Links ▾

For details about a cemetery's location:

- Use the embedded map below.
- [Open the map](#) in a larger format. From that map, you can also view the map in Google Earth.
- Click on cemetery name in the list below the map.

The Library has an index to pre-1980 burials in Wood County cemeteries. [Contact us](#) for look-ups. Please send all corrections to [McMillan Memorial Library](#).



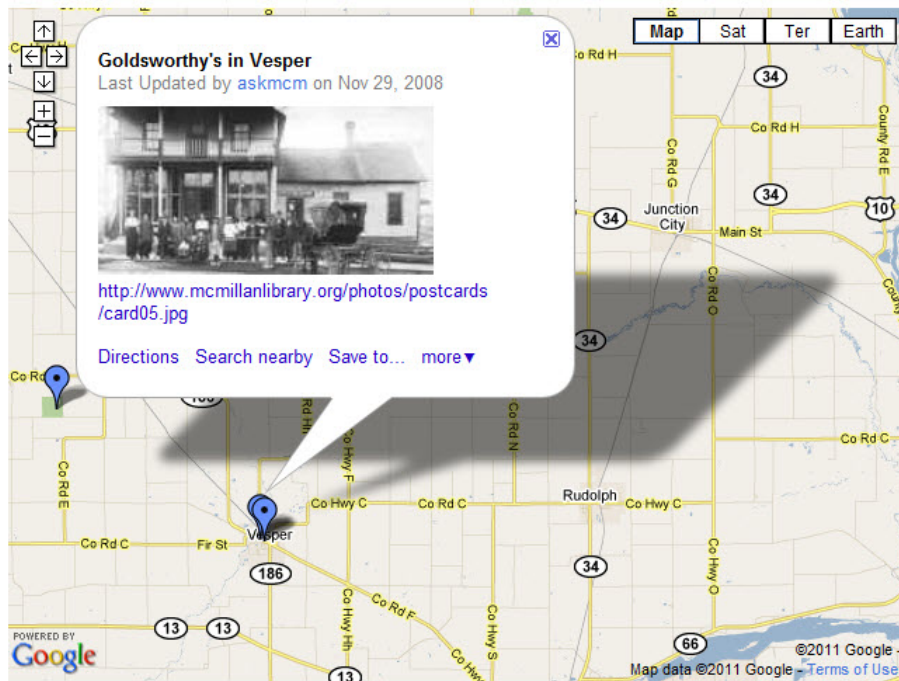
<http://www.mcmillanlibrary.org/history/cemeteries.html>

McMillan Memorial Library : Postcard Collection

Bonnie Young Postcard Collection



The following postcards are from the private collection of Bonnie Young. Included are postcards covering Wisconsin Rapids/Grand Rapids, Nekoosa and Vesper, as well as postcards from elsewhere in V Creative Commons [Attribution Non-Commercial No Derivative Works 3.0](#). This allows private, educational and non-commercial use with attribution. Contact the Library to obtain permission for other use that map, you can also view the map in Google Earth.



[View Larger Map:](#)

<http://www.mcmillanlibrary.org/history/postcards.html>



products that meet and exceed the evolving needs of our customers

[home](#)

[about](#)

[products](#)

[downloads](#)

[training](#)

[support](#)

[forum](#)

search



[home](#) > [products](#) > [public library solutions](#) > [netloan public](#) > [libraryguide access+](#)

libraryGUIDE Access+



- Provide interactive maps of your library
- Pin-point your facilities and services
- Keep your floorplans up to date
- Offer self-service in your library

Our new libraryGUIDE Access+ is an interactive mapping tool that staff and citizens can use to find exactly what they are looking for in your library.

Using interactive technology, a unique map of your library floor plan can be created to detail and locate everything from book categories and computer locations, to lifts and fire exits.

libraryGUIDE Access+ enhances the self-service environment, enabling citizens to enjoy their library experience and staff to spend time on other activities.

A [libraryGUIDE Access+ demo](#) plus more information can be found here.



[features & benefits](#)



[downloads](#)



[request a demo](#)



[contact us](#)

login

Username: Password:

Forgotten username or password?
Not got a login? [Register](#)

- [public sector solutions](#) >>
- [public library solutions](#) >>
- [netloan public](#) >>
- [features and benefits](#) >>
- [netloan system requirements](#) >>
- [wi-fi](#) >>
- [kiosk+](#) >>
- [charging](#) >>
- [netloan combi](#) >>
- [libraryguide access+](#) >>
- [features and benefits](#) >>
- [webstat](#) >>
- [offline](#) >>
- [case studies](#) >>
- [netloan downloads](#) >>
- [connect2 libraries](#) >>

<http://www.lorensbergs.com/public-library-solutions/netloan-public/libraryguide-access.aspx>



Breaking down the silos

GIS is not a subject, but a multi-disciplinary technology

Although many libraries still have a GIS librarian or a GIS technician, we should conceptualize GIS as a companion to current library services

Virtually every subject area will find use for GIS – English, History, Psychology, Health Sciences, etc.

GIS has evolved from a subject area to an integral part of research and library activity



For Reference Services

Many of the enquiries made of libraries and their on-line systems have a geographical question at their core e.g. 'where is....'; where can I find.... 'are there any.... in', 'who lives at...'. Street and land maps, voters' lists, weather maps, satellite images and environmental information are part of the resource which may be used to answer these enquiries.

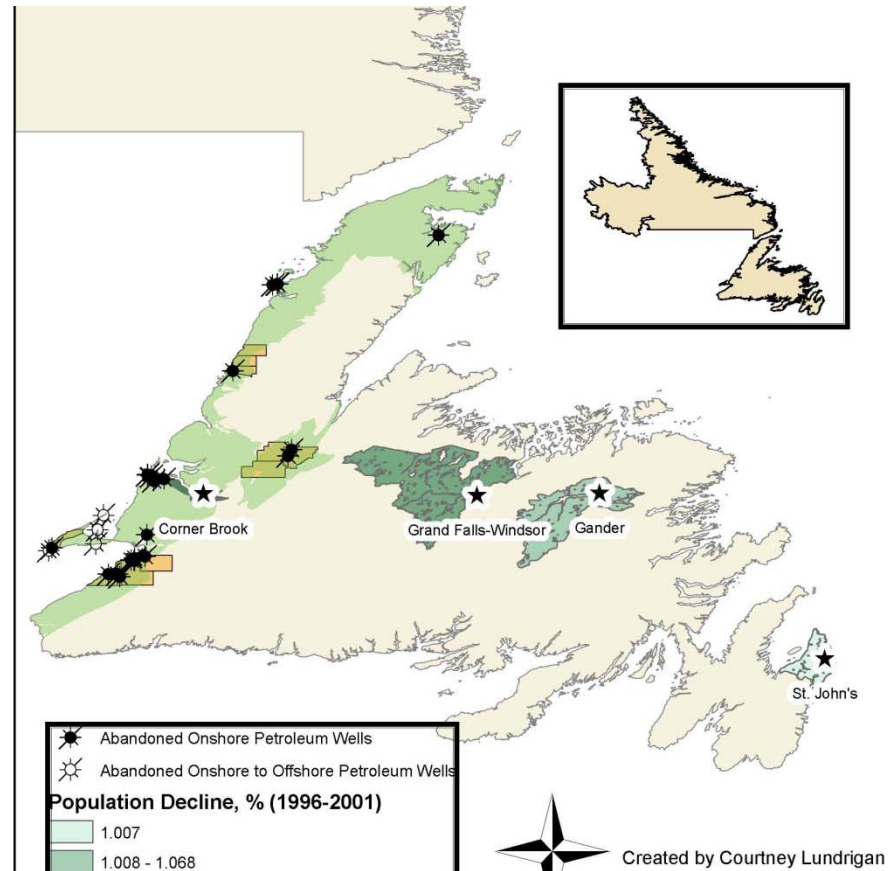
As more and more geographic and cartographic data goes over to a primarily digital form librarians will have to grasp the nettle of providing GIS and its supporting hardware to the public

- workshops, help create maps, insert into reports....

The Importance of GIS Training for Library Staff

Why learn about GIS?

WHY NOT?



Population Decline, % (1996-2001)

Courtney Lundrigan, August 2010

Information to take back to the office

- Multidisciplinary uses for mapping – how can it be used in your disciplines?
- Familiarity with features of online mapping programs (what can they do?)
– Google Earth, Google mashups, other online programs
- An understanding that any information with a geographical component can be mapped (displaying database files) – e.g. Survey results, census data
- Consider working with the GIS librarian to imbed mapping resources into the classrooms/course curriculum

References

Rogers, Curtis. Social Media, Libraries, and Web 2.0 : How American Libraries are Using New Tools for Public Relations and to Attract new Users. *Slideshare*. <http://www.slideshare.net/crr29061/social-media-libraries-and-web-20-how-american-libraries-are-using-new-tools-for-public-relations-and-to-attract-new-users> (accessed 18 April, 2010.).

Scribd. *Social Media 2008 Statistics*. <http://www.scribd.com/doc/11481779/Social-Media-2008-Statistics>. (accessed 21 April, 2010).

Statsaholic. *Website Traffic Graphs for Flickr*. http://www.statsaholic.com/flickr.com_ (accessed 21 April, 2010).

Yahoo News. “Twitter has over 105 million registered users : co-founder”, Yahoo News, April 14, 2010. http://news.yahoo.com/s/afp/20100414/tc_afp/usitcompanysoftwareinternettwitter (accessed 16 April, 2010).